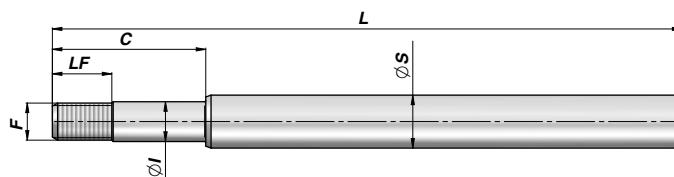
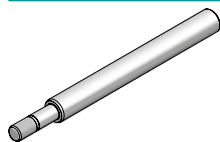


SBL

STELO CROMATO TORNITO PER CILINDRI SEMPLICE/DOPPIO EFFETTO
TURNED CHROMED ROD FOR SINGLE/DOUBLE ACTING CYLINDERS

Series M250

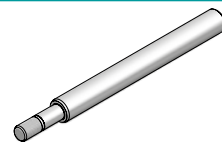
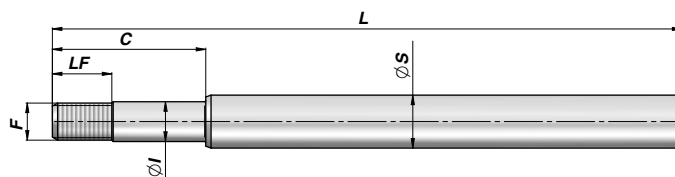


Codice Code	ØS	Alesaggio Bore	Corsa Stroke	L	ØI	C	F	LF	kg
SBL0160250050	16	25	50	128	11	31	M10x1.5	24,5	0,18
SBL0160250100			100	178					0,25
SBL0160250150			150	228					0,33
SBL0160250200			200	278					0,40
SBL0200320050	20	32	50	147	15	48	M14x1.5	21	0,30
SBL0200320100			100	197					0,43
SBL0200320150			150	247					0,55
SBL0200320200			200	297					0,67
SBL0200320250			250	347					0,79
SBL0200320300			300	397					0,91
SBL0200320400			400	497					1,10
SBL0200320500			500	597					1,40
SBL2010100	20	40	100	220	15	58	M14x1.5	23	0,48
SBL2010150			150	270					0,60
SBL2010200			200	320					0,72
SBL2010250			250	370					0,84
SBL2010300			300	420					0,97
SBL2010350			350	470					1,09
SBL2010400			400	520					1,21
SBL2010450			450	570					1,33
SBL2010500	500	620	1,46						
SBL2510100	25	40	100	220	15	58	M14x1.5	23	0,70
SBL2510150			150	270					0,89
SBL2510200			200	320					1,08
SBL2510250			250	370					1,27
SBL2510300			300	420					1,47
SBL2510350			350	470					1,66
SBL2510400			400	520					1,85
SBL2510450			450	570					2,04
SBL2510500			500	620					2,23
SBL2510550			550	670					2,42
SBL2510600	600	720	2,61						
SBL2520100	25	50	100	230	20	65	M20x1.5	30	0,79
SBL2520150			150	280					0,98
SBL2520200			200	330					1,17
SBL2520250			250	380					1,37
SBL2520300			300	430					1,56
SBL2520350			350	480					1,75
SBL2520400			400	530					1,94
SBL2520450			450	580					2,13
SBL2520500			500	630					2,32
SBL2520550			550	680					2,51
SBL2520600			600	730					2,71
SBL2520700 NEW!			700	830					3,10
SBL2520800	800	930	3,47						
SBL2521000	1000	1130	4,24						

STELO CROMATO TORNITO PER CILINDRI SEMPLICE/DOPPIO EFFETTO
TURNED CHROMED ROD FOR SINGLE/DOUBLE ACTING CYLINDERS

SBL

Series M250

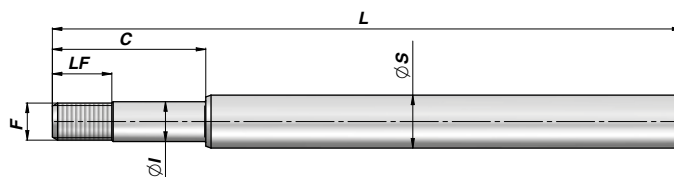
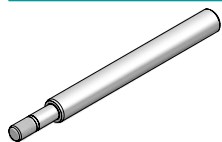


Codice Code	ØS	Alesaggio Bore	Corsa Stroke	L	ØI	C	F	LF	kg
SBL3020100	30	50	100	230	20	65	M20x1.5	30	0,90
SBL3020150			150	280					1,12
SBL3020200			200	330					1,34
SBL3020250			250	380					1,57
SBL3020300			300	430					1,79
SBL3020350			350	480					2,01
SBL3020400			400	530					2,24
SBL3020450			450	580					2,46
SBL3020500			500	630					2,68
SBL3020550			550	680					2,91
SBL3020600			600	730					3,13
SBL3020700			700	830					3,58
SBL3020800			800	930					4,02
SBL3021000	1000	1130	4,92						
SBL3021500	1500	1630	7,17						
SBL3030100	30	60/70	100	248	20	75	M20x1.5	30	1,14
SBL3030150			150	298					1,41
SBL3030200			200	348					1,69
SBL3030250			250	398					1,97
SBL3030300			300	448					2,24
SBL3030350			350	498					2,52
SBL3030400			400	548					2,79
SBL3030450			450	598					3,07
SBL3030500			500	648					3,34
SBL3030550			550	698					3,62
SBL3030600			600	748					3,89
SBL3030700 NEW!			700	848					4,47
SBL3030800			800	948					5,00
SBL3031000	1000	1148	6,10						
SBL3530100	35	60/70	100	248	20	75	M20x1.5	30	1,48
SBL3530150			150	298					1,86
SBL3530200			200	348					2,23
SBL3530250			250	398					2,61
SBL3530300			300	448					2,98
SBL3530350			350	498					3,36
SBL3530400			400	548					3,73
SBL3530450			450	598					4,11
SBL3530500			500	648					4,48
SBL3530550			550	698					4,86
SBL3530600			600	748					5,23
SBL3530700 NEW!			700	848					6,02
SBL3530800			800	948					6,74
SBL3531000	1000	1148	8,24						
SBL3531500	1500	1648	11,99						
SBL4040100 NEW!	40	60/70	100	248	27	75	M27x2	30	2,03
SBL4040150 NEW!			150	298					2,52
SBL4040200			200	348					3,01
SBL4040250			250	398					3,50
SBL4040300			300	448					3,99
SBL4040350			350	498					4,48
SBL4040400			400	548					4,97
SBL4040450			450	598					5,46
SBL4040500			500	648					5,95
SBL4040550			550	698					6,44
SBL4040600			600	748					6,93
SBL4040700 NEW!			700	848					7,95
SBL4040800			800	948					8,89
SBL4041000	1000	1148	10,85						
SBL4041500	1500	1648	15,58						

SBL

STELO CROMATO TORNITO PER CILINDRI SEMPLICE/DOPPIO EFFETTO
TURNED CHROMED ROD FOR SINGLE/DOUBLE ACTING CYLINDERS

Series M250



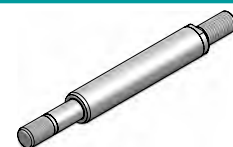
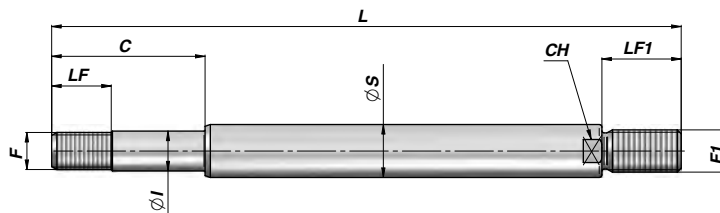
Codice Code	ØS	Alesaggio Bore	Corsa Stroke	L	ØI	C	F	LF	kg
SBL0400630200	40	63	200	348	24	75	M24x2	35	2,92
SBL0400630250			250	398					3,40
SBL0400630300			300	448					3,90
SBL0400630400			400	548					4,88
SBL0400630500			500	648					5,87
SBL0400630600			600	748					6,85
SBL0400630700 NEW!			700	848					7,88
SBL0400630800			800	948					8,80
SBL0400631000			1000	1148					10,76
SBL4050200	40	80	200	368	27	83	M27x2	38	3,17
SBL4050250			250	418					3,66
SBL4050300			300	468					4,15
SBL4050400			400	568					5,13
SBL4050500			500	668					6,11
SBL4050600			600	768					7,09
SBL4050700 NEW!			700	868					8,10
SBL4050800			800	968					9,05
SBL4051000			1000	1168					11,01
SBL5050200	50	80	200	368	27	83	M27x2	38	4,74
SBL5050250			250	418					5,50
SBL5050300			300	468					6,27
SBL5050400			400	568					7,80
SBL5050500			500	668					9,33
SBL5050600			600	768					10,86
SBL5050700 NEW!			700	868					12,45
SBL5050800			800	968					13,93
SBL5051000			1000	1168					16,99
SBL5051500	1500	1668	24,64						
SBL0500900300	50	90	300	471	33	88	M33x2	43	6,46
SBL0500900400			400	571					8,00
SBL0500900500			500	671					9,54
SBL0500900600			600	771					11,09
SBL0500900700 NEW!			700	871					12,63
SBL0500900800			800	971					14,17
SBL0500901000	1000	1171	17,25						
SBL5060200	50	100	200	395	33	88	M33x2	43	5,29
SBL5060250			250	445					6,06
SBL5060300			300	495					6,82
SBL5060400			400	595					8,35
SBL5060500			500	695					9,89
SBL5060600			600	795					11,42
SBL5060700 NEW!			700	895					13,01
SBL5060800			800	995					14,48
SBL5061000			1000	1195					17,54
SBL6060300	60	100	300	495	33	88	M33x2	43	9,56
SBL6060400			400	595					11,77
SBL6060500			500	695					13,98
SBL6060600			600	795					16,18
SBL6060700 NEW!			700	895					18,46
SBL6060800			800	995					20,59
SBL6061000			1000	1195					25,00
SBL6061500	1500	1695	36,00						

MATERIALE : ACCIAIO UNI C45 SAE 1045 - CROMO 25 µm ±5 Rating 9 / 200h (<ø20 120h) ISO 10289 - 1999/ISO
MATERIAL : STEEL UNI C45 SAE 1045 - CHROME 25 µm ±5 Rating 9 / 200h (<ø20 120h) ISO 10289 - 1999/ISO

STELO CROMATO TORNITO PER CILINDRI SEMPLICE/DOPPIO EFFETTO
TURNED CHROMED ROD FOR SINGLE/DOUBLE ACTING CYLINDERS



Series M250



Codice Code	ØS	Alesaggio Bore	Corsa Stroke	L	ØI	C	F	LF	F1	LF1	CH	kg	
SBFG200400100	20	40	100	238	15	58	M14x1,5	23	M16x1.5	30	18	0,60	
SBFG200400200			200	338									0,74
SBFG200400300			300	438									0,98
SBFG200400400			400	538									1,23
SBFG200400500			500	638									1,47
SBFG300500100	30	50	100	258	20	65	M20x1,5	30	M20x1.5	40	26	1,10	
SBFG300500200			200	358								1,65	
SBFG300500300			300	458								2,20	
SBFG300500400			400	558								2,75	
SBFG300500500	500	658	3,30										
SBFG350600100	35	60	100	285	24	75	M24x2	35	M27x2	50	32	1,68	
SBFG350600200			200	385								2,43	
SBFG350600300			300	485								3,18	
SBFG350600400			400	585								3,95	
SBFG350600500	500	685	4,68										
SBFG400700100	40	70	100	297	27	75	M27x2	30	M30x2	60	36	2,26	
SBFG400700200			200	397								3,25	
SBFG400700300			300	497								4,26	
SBFG400700400			400	597								5,25	
SBFG400700500	500	697	6,25										
SBFG500800100	50	80	100	328	27	83	M27x2	38	M36x2	70	45	3,51	
SBFG500800200			200	428								5,12	
SBFG500800300			300	528								6,65	
SBFG500800400			400	628								8,18	
SBFG500800500	500	728	9,71										
SBFG501000100	50	100	100	355	33	88	M33x2	43	M36x2	70	45	4,18	
SBFG501000200			200	455								5,70	
SBFG501000300			300	555								7,25	
SBFG501000400			400	655								8,79	
SBFG501000500	500	755	10,33										

MATERIALE : ACCIAIO UNI C45 SAE 1045 - CROMO 25 µm ±5 Rating 9 / 200h (<ø20 120h) ISO 10289 - 1999/ISO 9227-NSS
 MATERIAL : STEEL UNI C45 SAE 1045 - CHROME 25 µm ±5 Rating 9 / 200h (<ø20 120h) ISO 10289 - 1999/ISO 9227-NSS