
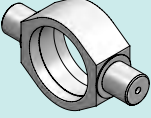
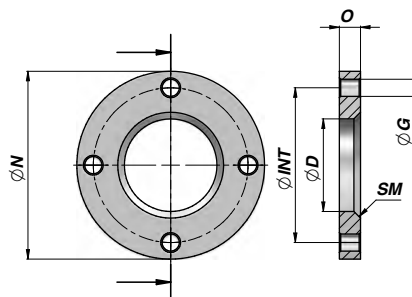


ATTACCHI A SILDARE SUL TUBO
WELDABLE ATTACHMENTS ON THE TUBE

	Descrizione - Description	Type	Page
	FLANGIA FLANGE	CFL	124
	PERNO BASCULANTE WELD-ON TRUNNION	CPB	125

CFL

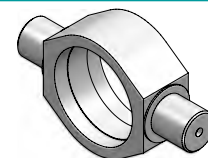
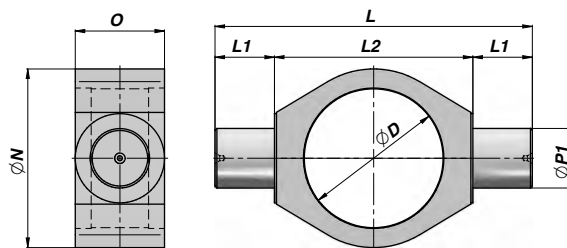
FLANGIA
FLANGE



Codice Code	ØD (+0,2 +0,3)	ØN	O	ØG	ØINT	SM	kg	Confezione Box	Pz Pcs
CFL0035072	35	72	10.0	ø 7 x 4	60	3x45°	0,23	Z50CFL0035072	50
CFL0040080	40	80	12.0	ø 9 x 4	65	3x45°	0,33	Z25CFL0040080	25
CFL0042089	42	89	12.0	ø 9 x 4	70	3x45°	0,43	Z20CFL0042089	20
CFL0045095	45	95	12.0	ø 9 x 4	75	3x45°	0,49	Z20CFL0045095	20
CFL0050109	50	109	12.5	ø 11 x 4	87	4x45°	0,66	Z25CFL0050109	25
CFL0055123	55	123	14.5	ø 11 x 4	100	4x45°	1,03	Z15CFL0055123	15
CFL0060128	60	128	14.5	ø 13 x 4	105	4x45°	1,09	Z20CFL0060128	20
CFL0065135	65	135	15.5	ø 13 x 4	110	4x45°	1,26	Z10CFL0065135	10
CFL0070142	70	142	16.5	ø 13 x 4	117	5x45°	1,50	Z10CFL0070142	10
CFL0073145	73	145	16.5	ø 13 x 4	120	5x45°	1,50	Z10CFL0073145	10
CFL0075152	75	152	16.5	ø 13 x 4	125	5x45°	1,68		
CFL0080162	80	162	16.5	ø 15 x 4	127	5x45°	1,94		
CFL0090175	90	175	18.5	ø 15 x 4	145	5x45°	2,44		
CFL0095181	95	181	18.5	ø 17 x 6	149	7x45°	2,53		
CFL0100188	100	188	18.5	ø 17 x 6	155	7x45°	2,81		
CFL0105188	105	188	24.5	ø 17 x 6	156	8x45°	3,44		
CFL0115194	115	194	24.5	ø 17 x 6	162	8x45°	3,47		
CFL0125228	123	228	28.0	ø 21 x 6	190	8x45°	5,93		
CFL0140240	138	240	28.0	ø 21 x 6	200	8x45°	6,05		
CFL0145250	143	250	28.0	ø 21 x 6	210	8x45°	6,65		
CFL0160280	158	280	33.0	ø 23 x 6	230	10x45°	9,98		
CFL0170300	168	300	38.0	ø 25 x 6	250	12x45°	13,24		
CFL0180325	178	325	38.0	ø 28 x 6	270	12x45°	15,84		

MATERIALE : ACCIAIO S355J0 (Fe510C)

MATERIAL : STEEL S355J0 (Fe510C)



Codice Code	ØD	ØP1 (+0,0 -0,1)	L1	L	ØN	O	L2	kg
CPB0351515	35	15	15	80	45	20	50	0,17
CPB0401515	40	15	15	80	50	20	50	0,16
CPB0422020	42	20	20	95	55	25	55	0,31
CPB0452020	45	20	20	100	60	25	60	0,36
CPB0100000	50	20	20	110	65	30	70	0,52
CPB0552020	55	20	20	115	70	30	75	0,52
CPB0200000	60	25	25	130	75	35	80	0,79
CPB0652525	65	25	25	140	85	35	90	0,95
CPB0300000	70	30	30	160	90	45	100	1,57
CPB0733030	73	30	30	160	95	45	100	1,57
CPB0753030	75	30	30	160	95	45	100	1,51
CPB0400000	80	35	35	180	100	50	110	2,03
CPB0903535	90	35	35	185	115	50	115	2,21
CPB0500000	92	40	40	195	115	55	115	2,60
CPB0501000	95	40	40	195	115	55	115	2,40
CPB1004040	100	40	40	200	120	55	120	2,46
CPB0550000	105	45	45	215	125	60	125	3,00
CPB0600000	115	50	50	245	145	70	145	5,30
CPB1255050	125	50	50	260	160	70	160	5,59
CPB0800000	140	60	60	290	170	80	170	7,70
CPB1456060	145	60	60	300	180	80	180	8,56
CPB1606060	160	60	60	320	200	100	200	12,79
CPB1707060	170	70	60	330	205	100	210	13,47
CPB1808060	180	80	60	350	225	105	230	18,24

TOLLERANZA - TOLERANCE : ØD ≤100 = +0,2 +0,3 - ØD >100 = +0,3 +0,4

MATERIALE : ACCIAIO S355J0 (Fe510C)

MATERIAL : STEEL S355J0 (Fe510C)