

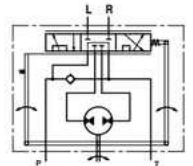
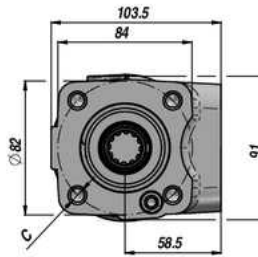
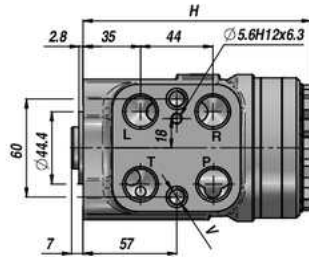
**HKU.../4**

ORBITROLS "M+S HYDRAULIC"  
"M+S HYDRAULIC" STEERING UNIT  
DIRECCION HIDROSTATICA "M+S HYDRAULIC"

CENTRE OUVERT  
OPEN CENTER  
CENTRO ABIERTO

NON REACTIF  
NON LOAD REACTION  
NO REACTIVA

SANS VALVES  
WITHOUT VALVES  
SIN VALVULAS



Code Code Código	Type Type Tipo	cm <sup>3</sup> /tr cm <sup>3</sup> /rev cm <sup>3</sup> /giro	LP RF VLP bar	VA SV VA bar	P MAX bar	P-T R-L BSP	V (x 2)	C (x 4)	H	kg
DHKU004410	HKU 40/4	39,6			140				130,8	5,30
DHKU005410	HKU 50/4	49,5			140				132,2	5,40
DHKU006410	HKU 63/4	65,6			170				133,9	5,50
DHKU008410	HKU 80/4	79,2			170				136,2	5,60
DHKU010410	HKU 100/4	99,0			170				138,8	5,70
DHKU012410	HKU 125/4	123,8			170				142,2	5,80
DHKU016410	HKU 160/4	158,4			170				146,8	6,00
DHKU020410	HKU 200/4	198,0	-	-	170	1/2"	M10x1	M10	152,2	6,30
DHKU025410	HKU 250/4	247,5			170				158,8	6,50
DHKU032410	HKU 320/4	316,8			170				168,2	7,00
DHKU040410	HKU 400/4	396,0			170				178,8	7,40
DHKU050410	HKU 500/4	495,0			170				192,0	8,00
DHKU063410	HKU 630/4	623,6			140				209,3	8,70
DHKU080410	HKU 800/4	793,0			140				232,2	9,60
DHKU100410	HKU1000/4	990,0			100				258,6	10,60

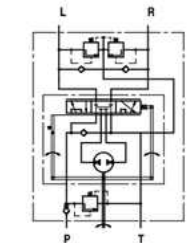
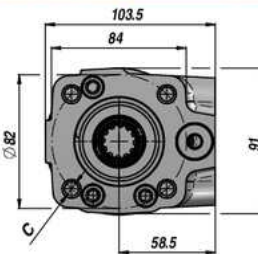
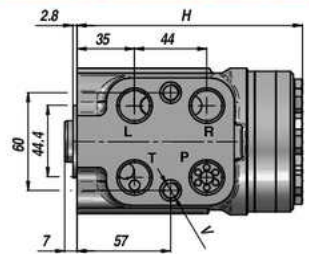
**HKUS.../4**

ORBITROLS "M+S HYDRAULIC"  
"M+S HYDRAULIC" STEERING UNIT  
DIRECCION HIDROSTATICA "M+S HYDRAULIC"

CENTRE OUVERT  
OPEN CENTER  
CENTRO ABIERTO

NON REACTIF  
NON LOAD REACTION  
NO REACTIVA

AVEC VALVES  
WITH VALVES  
CON VALVULAS



Code Code Código	Type Type Tipo	cm <sup>3</sup> /tr cm <sup>3</sup> /rev cm <sup>3</sup> /giro	LP RF VLP bar	VA SV VA bar	P MAX bar	P-T R-L BSP	V (x 2)	C (x 4)	H	kg
DHKUS04410	HKUS 40/4/100	39,6			140				130,8	5,30
DHKUS05410	HKUS 50/4/100	49,5			140				132,2	5,40
DHKUS06410	HKUS 63/4/100	65,6			170				133,9	5,50
DHKUS08410	HKUS 80/4/100	79,2			170				136,2	5,60
DHKUS10410	HKUS 100/4/100	99,0			170				138,8	5,70
DHKUS12410	HKUS 125/4/100	123,8	100	160	170	1/2"	M10x1	M10	142,2	5,80
DHKUS16410	HKUS 160/4/100	158,4			170				146,8	6,00
DHKUS20410	HKUS 200/4/100	198,0			170				152,2	6,30
DHKUS25410	HKUS 250/4/100	247,5			170				158,8	6,50
DHKUS32410	HKUS 320/4/100	316,8			170				168,2	7,00
DHKUS40410	HKUS 400/4/100	396,0			170				178,8	7,40
DHKUS50410	HKUS 500/4/100	495,0			170				192,0	8,00

VALVES INTEGREGES: VALVE ANTI-RETOUR + LIMITEUR DE PRESSION (LP) + VALVE ANTICAVITATION + VALVE ANTICHOCK (VA)

BUILT-IN VALVES: CHECK VALVE + RELIEF VALVE (RF) + ANTICAVITATION VALVES + SHOCK VALVES (SV)

VALVULAS INTEGRADAS: VALVULA ANTIRRETORNO + VALVULA LIMITADORA DE PRESION (VLP) + VALVULA ANTICAVITACION + VALVULA ANTICHOQUE (VA)

**ORBITROLS "M+S HYDRAULIC"**  
"M+S HYDRAULIC" STEERING UNIT  
DIRECCION HIDROSTATICA "M+S HYDRAULIC"

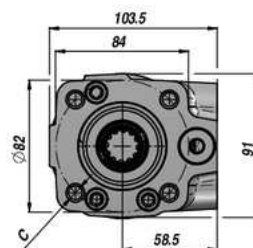
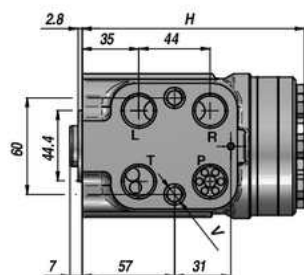
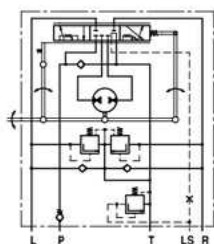
**CENTRE FERME**  
CLOSED CENTER  
CENTRO CERRADO

**NON REACTIF**  
NON LOAD REACTION  
NO REACTIVA

**AVEC VALVES**  
WITH VALVES  
CON VALVULAS

**HKUS.../5**

**LOAD SENSING**



Code Code Código	Type Type Tipo	cm <sup>3</sup> /tr cm <sup>3</sup> /rev cm <sup>3</sup> /giro	LP RF VLP bar	VA SV VA bar	P MAX bar	P-T R-L BSP	V (x 2)	C (x 4)	H	kg
DHKUS50401	HKUS 40/5/100	39,6			125				130,8	5,30
DHKUS50501	HKUS 50/5/100	49,5			150				132,2	5,40
DHKUS50601	HKUS 63/5/100	65,6			175				133,9	5,50
DHKUS50801	HKUS 80/5/100	79,2			175				136,2	5,60
DHKUS51001	HKUS 100/5/100	99,0			175				138,8	5,70
DHKUS51201	HKUS 125/5/100	123,8	100	160	175	1/2"	M10x1	M10	142,2	5,80
DHKUS51601	HKUS 160/5/100	158,4			175				146,8	6,00
DHKUS52001	HKUS 200/5/100	198,0			175				152,2	6,30
DHKUS52501	HKUS 250/5/100	247,5			175				158,8	6,50
DHKUS53201	HKUS 320/5/100	316,8			175				168,2	7,00
DHKUS54001	HKUS 400/5/100	396,0			175				178,8	7,40

VALVES INTEGRES: VALVE ANTI-RETOUR + LIMITEUR DE PRESSION (LP) + VALVE ANTICAVITATION + VALVE ANTICHOCK (VA)

BUILT-IN VALVES: CHECK VALVE + RELIEF VALVE (RF) + ANTICAVITATION VALVES + SHOCK VALVES (SV)

VALVULAS INTEGRADAS: VALVULA ANTIRRETORNO + VALVULA LIMITADORA DE PRESION (VLP) + VALVULA ANTICAVITACION + VALVULA ANTICHOQUE (VA)

HKUS.../5 = POUR VALVE PRIORITAIRE FLASQUABLE - FOR FACE MOUNTING PRIORITY VALVE - PARA VALVULA PRIORITARIA EMBRIDADA

SUR DEMANDE - ON REQUEST - BAJO PEDIDO:

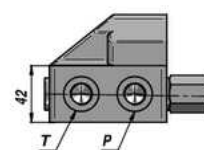
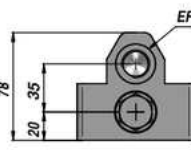
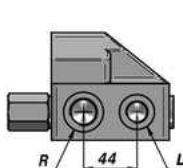
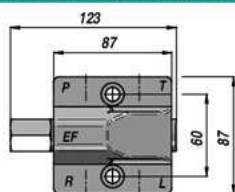
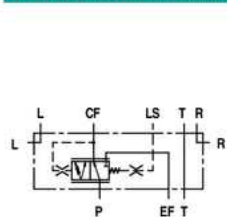
HKUS.../5T = POUR VALVE PRIORITAIRE EN LIGNE - FOR PIPE MOUNTING PRIORITY VALVE - PARA VALVULA PRIORITARIA EN LINEA

HKUS.../5D - HKUS.../5DT = AVEC SIGNAL DYNAMIQUE - WITH DYNAMIC SIGNAL - CON SEÑAL DINÁMICO

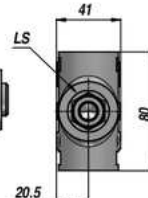
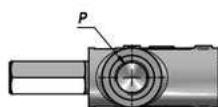
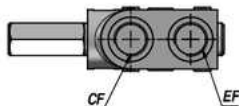
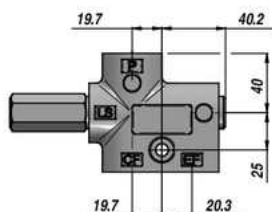
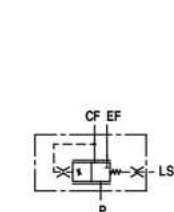
**VALVE PRIORITAIRE POUR ORBITROL LOAD-SENSING**  
PRIORITY VALVE FOR LOAD-SENSING STEERING UNIT  
VALVULA PRIORITARIA PARA DIRECCION HYDROSTATICA "LOAD SENSING"

**VPRD**

**VPRTA**



**PRD - STATIC SIGNAL**



**PRTA - STATIC SIGNAL**

Code Code Código	Type Type Tipo	Signal Signal Señal	Q MAX l/min	Ressort Spring Muelle	P - EF BSP	T - R - L BSP	CF BSP	LS BSP	kg
VPRD0800 **	PRD 80/** (x HKUS.../5)	Static	80	4-7-10 bar	1/2"	3/8"			2,25
VPRDD080 **	PRD-D 80/** (x HKUS.../5)	Dynamic	80	4-7-10 bar	1/2"	3/8"			2,25
VPRTA080 **	PRTA 80/** (x HKUS.../5T)	Static	80	4-7-10 bar	1/2"		1/2"	1/4"	1,30
VPRTAD08 **	PRTA-D 80/** (x HKUS.../5T)	Dynamic	80	4-7-10 bar	1/2"		1/2"	1/4"	1,30

\*\* = 04 - 07 - 10 bar

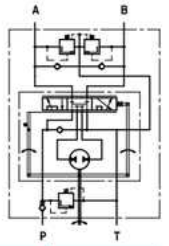
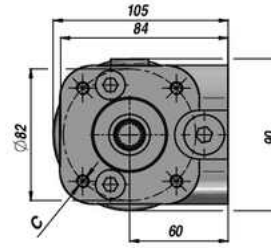
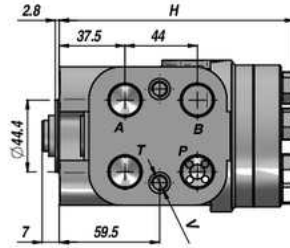
**DIG2S...-1**

ORBITROLS "Z-J HYDRAULIC"  
"Z-J HYDRAULIC" STEERING UNIT  
DIRECCION HIDROSTATICA "Z-J HYDRAULIC"

CENTRE OUVERT  
OPEN CENTER  
CENTRO ABIERTO

NON REACTIF  
NON LOAD REACTION  
NO REACTIVA

AVEC VALVES  
WITH VALVES  
CON VALVULAS



Code Code Código	Type Type Tipo	cm <sup>3</sup> /tr cm <sup>3</sup> /rev cm <sup>3</sup> /giro	LP RF VLP bar	VA SV VA bar	P MAX bar	P-T A-B BSP	V (x 2)	C (x 4)	H	kg
DIG2S105010E	DIG2S-1-050-10-E	50							140,0	6,00
DIG2S108010E	DIG2S-1-080-10-E	80							144,0	6,20
DIG2S110010E	DIG2S-1-100-10-E	100							146,0	6,30
DIG2S112510E	DIG2S-1-125-10-E	125	100	160	160	1/2"	M10x1	M10	149,0	6,40
DIG2S116010E	DIG2S-1-160-10-E	160							154,0	6,60
DIG2S120010E	DIG2S-1-200-10-E	200							159,0	6,80
DIG2S125010E	DIG2S-1-250-10-E	250							165,0	7,00
DIG2S131510E	DIG2S-1-315-10-E	315							175,0	7,40

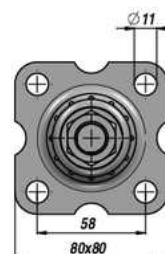
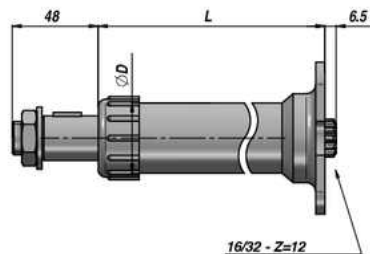
VALVES INTEGRES: VALVE ANTI-RETOUR + LIMITEUR DE PRESSION (LP) + VALVE ANTICAVITATION + VALVE ANTICHOCK (VA)

BUILT-IN VALVES: CHECK VALVE + RELIEF VALVE (RF) + ANTICAVITATION VALVES + SHOCK VALVES (SV)

VALVULAS INTEGRADAS: VALVULA ANTIRRETORNO + VALVULA LIMITADORA DE PRESION (VLP) + VALVULA ANTICAVITACION + VALVULA ANTICHOQUE (VA)

**ACI**

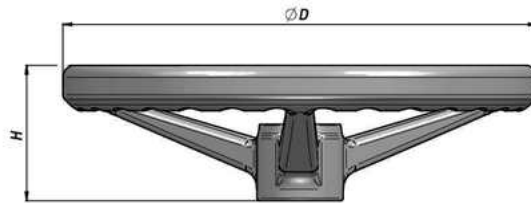
COLONNE DE DIRECTION  
STEERING COLUMN  
COLUMNA DE DIRECCION



Code Code Código	L	ØD	Cône Taper Cónico	kg
ACI0075000	75			0,70
ACI0150000	150			0,97
ACI0200000	200			1,05
ACI0270000	270			1,25
ACI0350000	350		Type 1	1,45
ACI0400000	400	38	1:20	1,55
ACI0450000	450		Ø23,2	1,65
ACI0520000	520		M18x1,5	1,92
ACI0600000	600			2,05
ACI0750000	775			2,45

**VOLANT**  
STEERING WHEEL  
VOLANTE

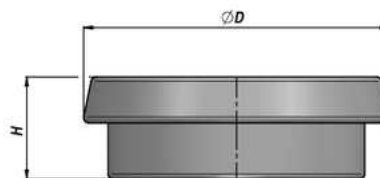
**AV**



Code Code Código	Type Type Tipo	ØD	H	Cône Taper Cónico	kg
AV00320001	360	352	105	1.20 (Type 1)	1,80
AV00320008	435	434	139	1.20 (Type 1)	2,18

**BOUCHON POUR VOLANT**  
CAP FOR STEERING-WHEEL  
TAPON PARA VOLANTE

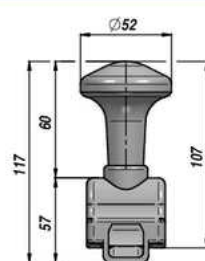
**AT**



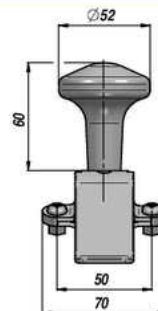
Code Code Código	Pour volant For steering-wheel Para volante	ØD	H	kg x 100
AT00470064	360	62	20	1,30
AT00470004	435	64	16,5	1,50

**BOULE POUR VOLANT**  
HARD KNOB FOR STEERING-WHEEL  
PERNO PARA VOLANTE

**AP**



Type 360



Type 435



Code Code Código	Pour volant For steering-wheel Para volante	kg x 100
AP00340212	Type 360	8,50
AP00340015	Type 435	21,00