



MOTEUR "Z-J HYDRAULIC"
"Z-J HYDRAULIC" MOTOR
MOTOR "Z-J HYDRAULIC"

ARBRE CYLINDRIQUE Ø25
PARALLEL SHAFT Ø25
EJE CILINDRICO Ø25

BRIDE "SAE A" - 2 TROUS
"SAE A" FLANGE - 2 HOLES
BRIDA "SAE A" - 2 ORIFICIOS

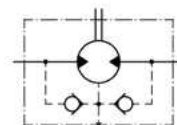
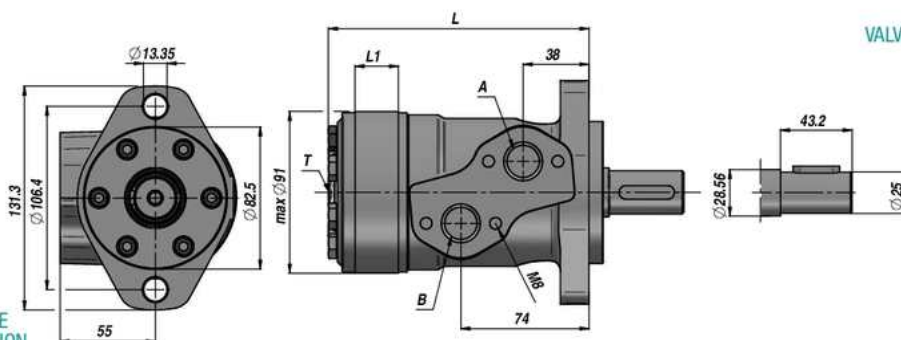
Standard: ARBRE RENFORCE POUR CHARGES RADIALES - WITH NEEDLE BEARINGS FOR RADIAL LOADS - CON RODAMIENTOS PARA CARGAS RADIALES

CLAPET ANTI-RETOUR INTEGRE
BUILT-IN CHECK VALVES
VALVULAS DE RETENCION INTEGRADAS



PEINTURE NOIR
BLACK PAINTED
PINTADO NEGRO

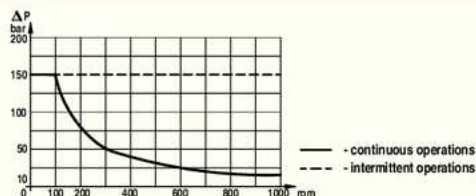
PREDISPOSITION POUR DRAINAGE
MACHINED FOR DRAIN CONNECTION
PREPARADO PARA DRENAJE



Code Code Código	Type Type Tipo	cm ³ /tr cm ³ /rev cm ³ /giro	n. Max tour/min rpm giro/min	M Max daNm	Q MAX l/min	P MAX bar			A - B	T	L	L1	kg
						Chute Drop Delta Δp	Entrée Inlet En entrada	Retour Return Retorno					
TRAVAIL EN CONTINU - CONTINUOUS WORK - TRABAJO EN CONTINUO													
MCPN050CDO	MC-PN 50 CD	51,7	879	8,1	45	125	165	150 *			137	7,0	5,60
MCPN080CDO	MC-PN 80 CD	77,7	740	12,9	60	125	165	150 *			140,5	10,5	5,70
MCPN100CDO	MC-PN 100 CD	96,2	589	16,1	60	125	165	150 *			143	13,0	5,90
MCPN125CDO	MC-PN 125 CD	117,9	475	20,2	60	125	165	150 *			146	16,0	6,00
MCPN160CDO	MC-PN 160 CD	155,5	370	24,5	60	125	165	150 *	1/2"	1/4"	151	21,0	6,20
MCPN200CDO	MC-PN 200 CD	189,9	296	28,6	60	110	165	150 *			157	26,0	6,40
MCPN250CDO	MC-PN 250 CD	231,0	237	36,0	60	110	165	150 *			162	32,0	6,60
MCPN315CDO	MC-PN 315 CD	311,7	189	40,6	60	90	165	150 *			172	42,0	6,90
MCPN400CDO	MC-PN 400 CD	386,2	149	43,5	60	70	165	150 *			182	52,0	7,40

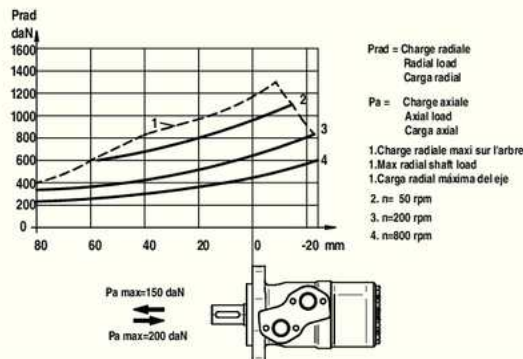
* = AVEC DRAINAGE - WITH DRAIN - CON DRENAJE

PRESSION MAXI EN RETOUR SANS DRAINAGE
MAX. RETURN PRESSURE WITHOUT DRAIN
PRESION MAXIMA EN LINEA DE RETORNO SIN DRENAJE



CHARGES ADMISSIBLES SUR L'ARBRE
PERMISSIBLE SHAFT LOADS
CARGAS DEL EJE ADMISIBLE

Arbre renforcé pour charges radiales- With Needle bearings - Con rodamientos para cargas radiales: "N"



MOTEUR "Z-J HYDRAULIC"
"Z-J HYDRAULIC" MOTOR
MOTOR "Z-J HYDRAULIC"

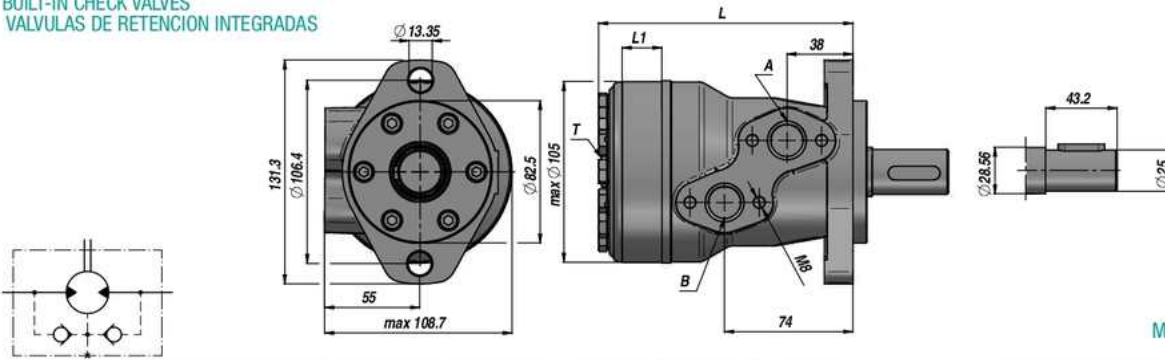
ARBRE CYLINDRIQUE Ø25
PARALLEL SHAFT Ø25
EJE CILINDRICO Ø25

BRIDE "SAE A" - 2 TROUS
"SAE A" FLANGE - 2 HOLES
BRIDA "SAE A" - 2 ORIFICIOS



Standard: ARBRE RENFORCE POUR CHARGES RADIALES - WITH NEEDLE BEARINGS FOR RADIAL LOADS - CON RODAMIENTOS PARA CARGAS RADIALES

CLAPET ANTI-RETOUR INTEGRE
BUILT-IN CHECK VALVES
VALVULAS DE RETENCION INTEGRADAS



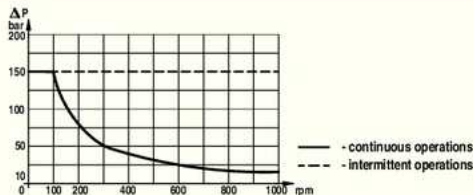
PEINTURE NOIR
BLACK PAINTED
PINTADO NEGRO

PREDISPOSITION POUR DRAINAGE
MACHINED FOR DRAIN CONNECTION
PREPARADO PARA DRENAJE

Code Code Código	Type Type Tipo	cm ³ /tr cm ³ /rev cm ³ /giro	n. Max tour/min rpm giro/min	M Max daNm	Q MAX l/min	P MAX bar			A - B	T	L	L1	kg
						Chute Drop Delta Δp	Entrée Inlet En entrada	Retour Return Retorno					
TRAVAIL EN CONTINU - CONTINUOUS WORK - TRABAJO EN CONTINUO													
MCRN050CDO	MC-RN 50 CD	51,3	755	10,0	40	140	175	150 *			140	10,0	6,70
MCRN080CDO	MC-RN 80 CD	80,6	750	19,0	60	175	175	150 *			146	16,0	6,90
MCRN100CDO	MC-RN 100 CD	100,8	600	24,0	60	175	175	150 *			150	20,0	6,90
MCRN125CDO	MC-RN 125 CD	124,9	475	29,2	60	175	175	150 *			155	25,0	7,20
MCRN160CDO	MC-RN 160 CD	157,2	375	36,3	60	165	175	150 *	1/2"	1/4"	161,5	31,5	7,50
MCRN200CDO	MC-RN 200 CD	199,2	300	35,8	60	130	175	150 *			170	40,0	8,00
MCRN250CDO	MC-RN 250 CD	252,0	240	35,2	60	110	175	150 *			180	50,0	8,50
MCRN315CDO	MC-RN 315 CD	314,5	190	36,0	60	85	175	150 *			192	62,0	9,00
MCRN400CDO	MC-RN 400 CD	370,0	160	42,0	60	85	175	150 *			204	74,0	9,30

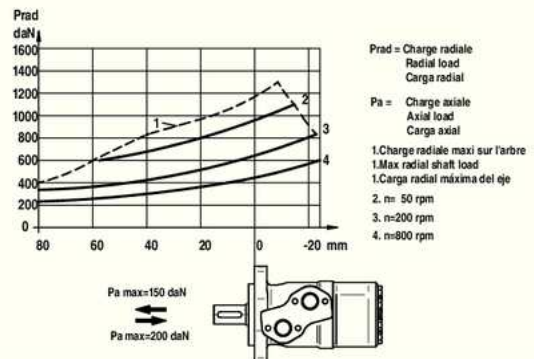
* = AVEC DRAINAGE - WITH DRAIN - CON DRENAJE

PRESSION MAXI EN RETOUR SANS DRAINAGE
MAX. RETURN PRESSURE WITHOUT DRAIN
PRESION MAXIMA EN LINEA DE RETORNO SIN DRENAJE



CHARGES ADMISSIBLES SUR L'ARBRE
PERMISSIBLE SHAFT LOADS
CARGAS DEL EJE ADMISIBLE

Arbre renforcé pour charges radiales- With Needle bearings - Con rodamientos para cargas radiales: "N"



MOTEURS
HYDRAULIC MOTORS - MOTORES LENTOS



MOTEUR "Z-J HYDRAULIC"
"Z-J HYDRAULIC" MOTOR
MOTOR "Z-J HYDRAULIC"

ARBRE CYLINDRIQUE Ø32
PARALLEL SHAFT Ø32
EJE CILINDRICO Ø32

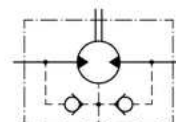
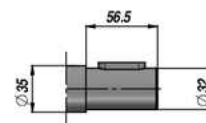
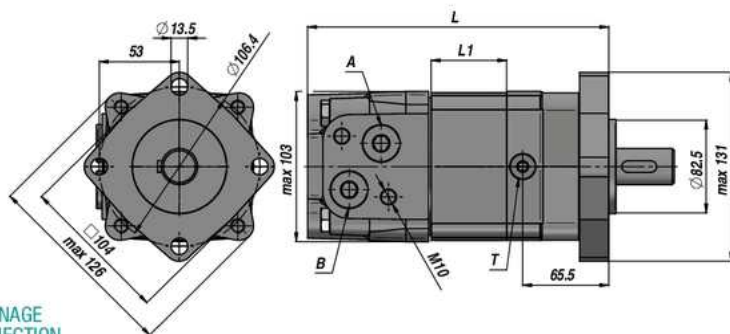
BRIDE "SAE A" - 4 TROUS
"SAE A" FLANGE - 4 HOLES
BRIDA "SAE A" - 4 ORIFICIOS

Standard: ARBRE RENFORCE POUR CHARGES RADIALES - WITH NEEDLE BEARINGS FOR RADIAL LOADS - CON RODAMIENTOS PARA CARGAS RADIALES

CLAPET ANTI-RETOUR INTEGRE
BUILT-IN CHECK VALVES
VALVULAS DE RETENCION INTEGRADAS



PEINTURE NOIR
BLACK PAINTED
PINTADO NEGRO

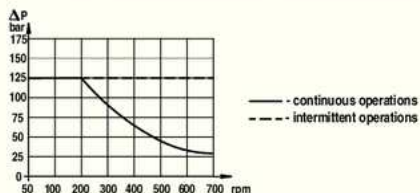


PREDISPOSITION POUR DRAINAGE
MACHINED FOR DRAIN CONNECTION
PREPARADO PARA DRENAJE

Code Code Código	Type Type Tipo	cm ³ /tr cm ³ /rev cm ³ /giro	n. Max tour/min rpm giro/min	M Max daNm	Q MAX l/min	P MAX bar			A - B	T	L	L1	kg
						Chute Drop Delta Δp	Entrée Inlet En entrada	Retour Return Retorno					
TRAVAIL EN CONTINU - CONTINUOUS WORK - TRABAJO EN CONTINUO													
MCSY080C00	MC-SY 80 C	80,6	800	22,5	65	205	250	125 *			170	16,0	9,80
MCSY100C00	MC-SY 100 C	100,8	748	29,0	75	205	250	125 *			174	20,0	10,00
MCSY125C00	MC-SY 125 C	125,0	600	36,5	75	205	250	125 *			179	25,0	10,30
MCSY160C00	MC-SY 160 C	154,0	470	48,5	75	200	250	125 *			181	27,0	10,70
MCSY200C00	MC-SY 200 C	194,0	375	58,6	75	200	250	125 *	1/2"	1/4"	188	34,0	11,10
MCSY250C00	MC-SY 250 C	243,0	300	70,8	75	200	250	125 *			196	42,0	11,60
MCSY315C00	MC-SY 315 C	311,0	240	88,0	75	200	250	125 *			208	54,0	12,30
MCSY400C00	MC-SY 400 C	394,0	185	88,0	75	160	250	125 *			223	69,0	13,20
MCSY475C00	MC-SY 475 C	475,0	155	91,0	75	140	250	125 *			237	83,0	14,30

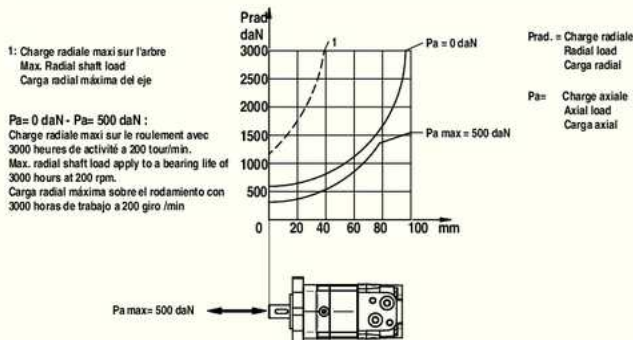
* = AVEC DRAINAGE - WITH DRAIN - CON DRENAJE

PRESSION MAXI EN RETOUR SANS DRAINAGE
MAX. RETURN PRESSURE WITHOUT DRAIN
PRESION MAXIMA EN LINEA DE RETORNO SIN DRENAJE



CHARGES ADMISSIBLES SUR L'ARBRE
PERMISSIBLE SHAFT LOADS
CARGAS DEL EJE ADMISIBLE

Arbre renforcé pour charges radiales - With Needle bearings - Con rodamientos para cargas radiales: "N"



MOTEUR "M+S HYDRAULIC"
"M+S HYDRAULIC" MOTOR
MOTOR "M+S HYDRAULIC"

ARBRE CYLINDRIQUE Ø16
PARALLEL SHAFT Ø16
EJE CILINDRICO Ø16

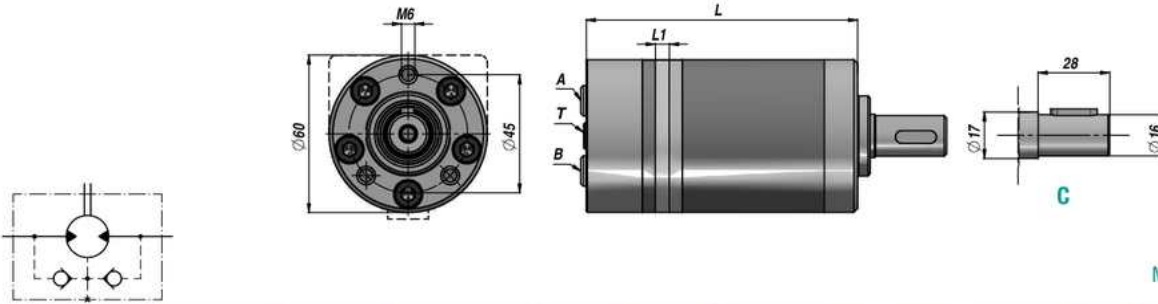
SANS BRIDE
WITHOUT FLANGE
SIN BRIDA



MPM (MM)

Standard: ALIMENTATIONS ARRIERES - REAR PORTS - ENTRADAS POSTERIORES

CLAPET ANTI-RETOUR INTEGRE
BUILT-IN CHECK VALVES
VALVULAS DE RETENCION INTEGRADAS



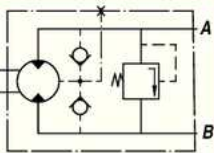
PREDISPOSITION POUR DRAINAGE
MACHINED FOR DRAIN CONNECTION
PREPARADO PARA DRENAJE

Code Code Código	Type Type Tipo	cm ³ /tr cm ³ /rev cm ³ /giro	n. Max tour/min rpm giro/min	M Max daNm	Q MAX l/min	P MAX bar			A - B	T	L	L1	kg
						Chute Drop Delta Δp	Entrée Inlet En entrada	Retour Return Retorno					
TRAVAIL EN CONTINU - CONTINUOUS WORK - TRABAJO EN CONTINUO													
MPM008NC16	MPM 8 C	8,2	1950	1,1	16	105	140	140 *	3/8"	1/8"	104	3,5	1,90
MPM012NC16	MPM 12 C	12,9	1550	1,6	20	105	140	140 *			106	5,5	2,00
MPM020NC16	MPM 20 C	20,0	1000	2,5	20	105	140	140 *			109	8,5	2,10
MPM032NC16	MPM 32 C	31,8	630	4,0	20	105	140	140 *			114	13,5	2,20
MPM040NC16	MPM 40 C	40,0	500	4,1	20	82,5	140	140 *			117,5	17,0	2,30
MPM050NC16	MPM 50 C	50,0	400	4,5	20	70	140	140 *	121,5	21,0	2,50		

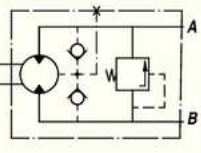
* = AVEC DRAINAGE - WITH DRAIN - CON DRENAJE

OPTION

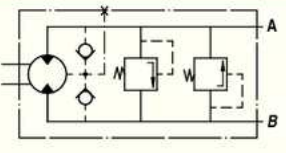
P.../R
LP SUR LA LIGNE "A"
RELIEF VALVE ON LINE "A"
VLP SOBRE LA LINEA "A"



P.../L
LP SUR LA LIGNE "B"
RELIEF VALVE ON LINE "B"
VLP SOBRE LA LINEA "B"



.../D
LP SUR LES LIGNES "A/B"
RELIEF VALVE ON LINES "A/B"
VLP SOBRE LAS LINEAS "A/B"



<p>OPTION</p> <p>CK</p>	<p>OPTION</p> <p>F: (Oval Mount)</p>	<p>OPTION</p> <p>S: ALIMENTATIONS LATERALES SIDE PORTS ENTRADAS POR LADO</p>	<p>PRESSION MAXI EN RETOUR SANS DRAINAGE MAX. RETURN PRESSURE WITHOUT DRAIN PRESION MAXIMA EN LINEA DE RETORNO SIN DRENAJE</p>
--------------------------------	---	---	---

<p>FLANGE KIT Code: MF48443014</p> <p>AVEC N.3 VIS M6x14 WITH No.3 SCREWS M6x14 CON N.3 TORNILLOS M6x14</p>	<p>CHARGES ADMISSIBLES SUR L'ARBRE PERMISSIBLE SHAFT LOADS CARGAS DEL EJE ADMISIBLE</p> <p>Arbre-Shaft-Eje: "C-CK-SH"</p> <p>Prad = charge radiale radial load carga radial</p> <p>Pa = charge axiale axial load carga axial</p>
--	---

MPP (MP)

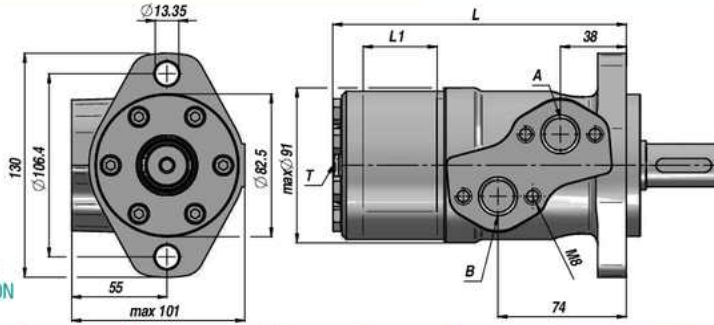


MOTEUR "M+S HYDRAULIC"
"M+S HYDRAULIC" MOTOR
MOTOR "M+S HYDRAULIC"

ARBRE CYLINDRIQUE Ø25
PARALLEL SHAFT Ø25
EJE CILINDRICO Ø25

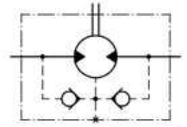
BRIDE "SAE A" - 2 TROUS
"SAE A" FLANGE - 2 HOLES
BRIDA "SAE A" - 2 ORIFICIOS

Standard: ALIMENTATIONS LATÉRALES - SIDE PORTS - ENTRADAS LATÉRALES



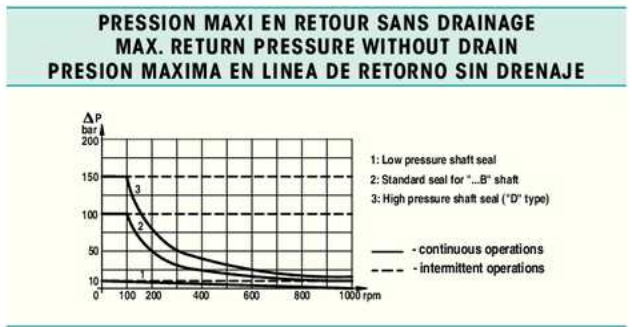
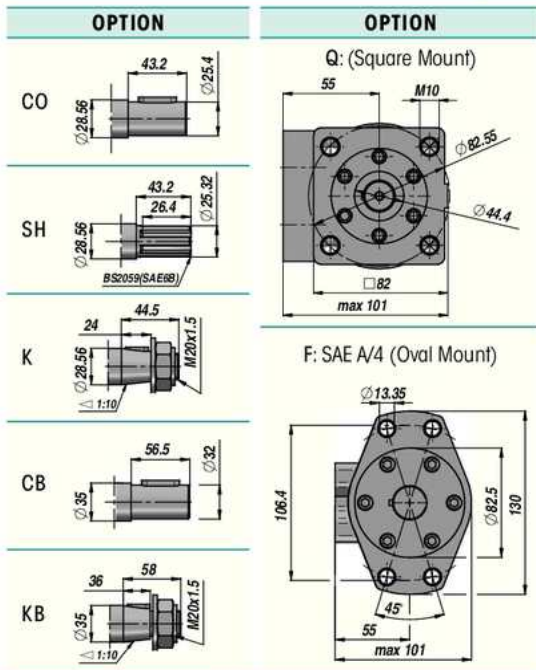
CLAPET ANTI-RETOUR INTEGRE
BUILT-IN CHECK VALVES
VALVULAS DE RETENCION INTEGRADAS

PREDISPOSITION POUR DRAINAGE
MACHINED FOR DRAIN CONNECTION
PREPARADO PARA DRENAJE

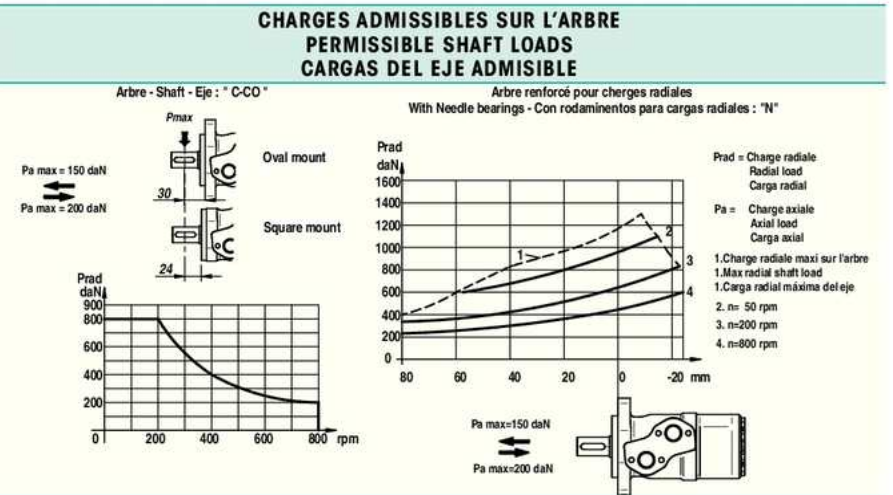


Code Code Código	Type Type Tipo	cm ³ /tr cm ³ /rev cm ³ /giro	n. Max tour/min rpm giro/min	M Max daNm	Q MAX l/min	P MAX bar			A - B	T	L	L1	kg
						Chute Drop Delta Δp	Entrée Inlet En entrada	Retour Return Retorno					
TRAVAIL EN CONTINU - CONTINUOUS WORK - TRABAJO EN CONTINUO													
MSP025NC25**	MPP 25 CD	25,0	1600	3,3	40	100	175	175 *			134	5,20	5,60
MSP032NC25**	MPP 32 CD	32,0	1560	4,3	50	100	175	175 *			135	6,30	5,60
MSP040NC25**	MPP 40 CD	40,0	1500	6,2	60	120	175	175 *			136,5	7,40	5,70
MSP050NC25	MPP 50 C	49,5	1210	9,4	60	140	175	175 *			135,5	6,67	5,80
MSP080NC25	MPP 80 C	79,2	755	15,1	60	140	175	175 *			139,5	10,67	5,90
MSP100NC25	MPP 100 C	99,0	605	19,3	60	140	175	175 *			142	13,33	6,10
MSP125NC25	MPP 125 C	123,8	486	23,7	60	140	175	175 *	1/2"	1/4"	145,5	16,67	6,20
MSP160NC25	MPP 160 C	158,4	378	31,3	60	140	175	175 *			150	21,33	6,40
MSP200NC25	MPP 200 C	198,0	303	36,6	60	140	175	175 *			155,5	26,67	6,60
MSP250NC25	MPP 250 C	247,5	242	38,0	60	110	175	175 *			162	33,33	6,80
MSP315NC25	MPP 315 C	316,8	190	38,0	60	90	175	175 *			171,5	42,67	7,10
MSP400NC25	MPP 400 C	396,0	150	36,0	60	70	175	175 *			182	53,33	7,60
MSP500NC25	MPP 500 C	495,0	120	39,0	60	60	140	140 *			195,5	66,63	8,90
MSP630NC25	MPP 630 C	623,6	95	44,0	60	55	140	140 *			213	84,00	9,50

* = AVEC DRAINAGE - WITH DRAIN - CON DRENAJE ** Que en version "D" - "D" Version only - Versión "D" solamente (voir graphique - see diagram - ver el gráfico)



VERSIONS SPECIALES - SPECIAL VERSIONS - VERSIONES ESPECIALES
D: joint d'arbre - shaft seal - junta del eje: max 150 bar
N/D: arbre renforcé - with needle bearings - con rodamientos
W: moto-rue - wheel mount - versión rueda



MOTEUR "M+S HYDRAULIC"
"M+S HYDRAULIC" MOTOR
MOTOR "M+S HYDRAULIC"

ARBRE CYLINDRIQUE Ø25
PARALLEL SHAFT Ø25
EJE CILINDRICO Ø25

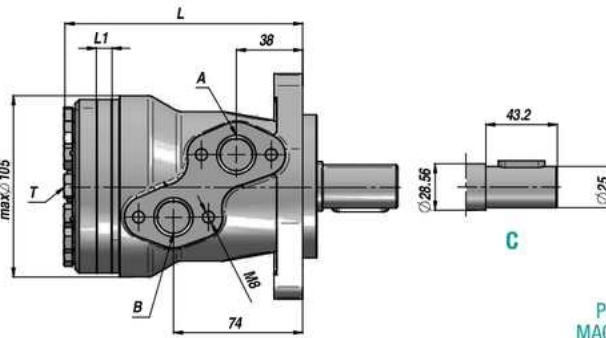
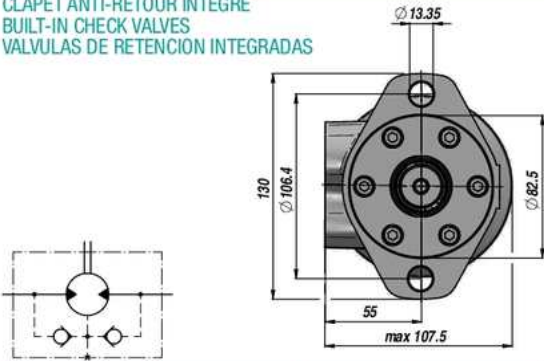
BRIDE "SAE A" - 2 TROUS
"SAE A" FLANGE - 2 HOLES
BRIDA "SAE A" - 2 ORIFICIOS



MPR (MR)

Standard: ALIMENTATIONS LATERALES - SIDE PORTS - ENTRADAS LATERALES

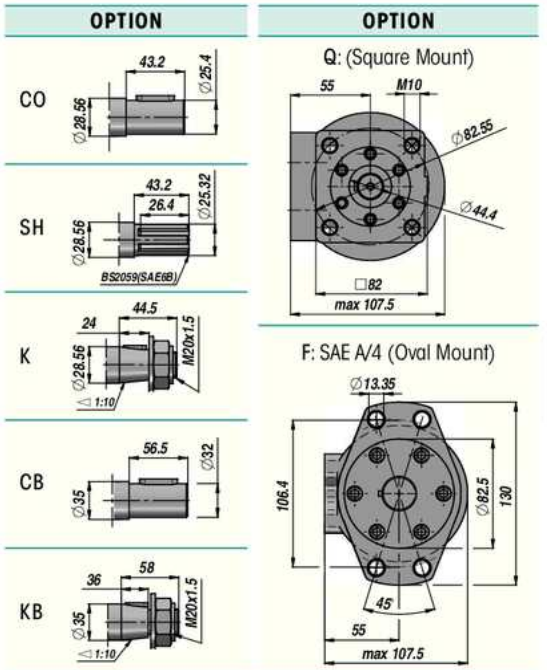
CLAPET ANTI-RETOUR INTEGRE
BUILT-IN CHECK VALVES
VALVULAS DE RETENCION INTEGRADAS



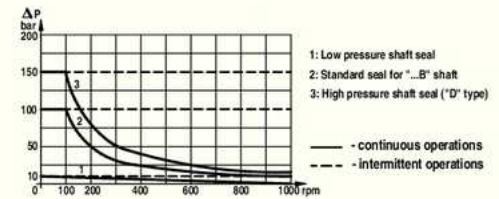
PREDISPOSITION POUR DRAINAGE
MACHINED FOR DRAIN CONNECTION
PREPARADO PARA DRENAJE

Code Code Código	Type Type Tipo	cm ³ /tr cm ³ /rev cm ³ /giro	n. Max tour/min rpm giro/min	M Max daNm	Q MAX l/min	P MAX bar			A - B	T	L	L1	kg
						Chute Drop Delta Δp	Entrée Inlet En entrada	Retour Return Retorno					
TRAVAIL EN CONTINUU - CONTINUOUS WORK - TRABAJO EN CONTINUO													
MSR050NC25	MPR 50 C	51,5	775	10,0	40	140	175	175 *			138	9,0	6,80
MSR080NC25	MPR 80 C	80,3	750	20,0	60	175	175	175 *			143	14,0	6,90
MSR100NC25	MPR 100 C	99,8	600	24,0	60	175	175	175 *			146	17,4	7,20
MSR125NC25	MPR 125 C	125,7	475	30,0	60	175	175	175 *			150,5	21,8	7,30
MSR160NC25	MPR 160 C	159,6	375	39,0	60	175	175	175 *	1/2"	1/4"	156,5	27,8	7,50
MSR200NC25	MPR 200 C	199,8	300	38,5	60	140	175	175 *			163,5	34,8	8,00
MSR250NC25	MPR 250 C	250,1	240	39,0	60	110	175	175 *			172	43,5	8,40
MSR315NC25	MPR 315 C	315,7	190	36,0	60	85	175	175 *			183	54,8	9,10
MSR400NC25	MPR 400 C	397,0	150	38,0	60	65	175	175 *			198	69,4	9,80

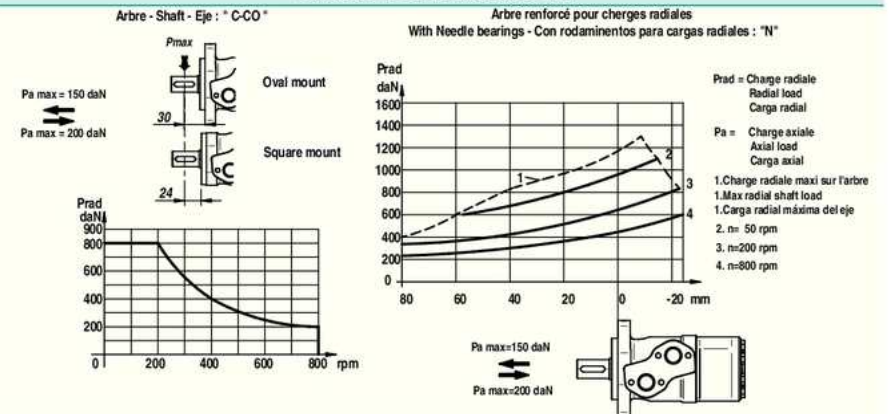
* = AVEC DRAINAGE - WITH DRAIN - CON DRENAJE



**PRESSION MAXI EN RETOUR SANS DRAINAGE
MAX. RETURN PRESSURE WITHOUT DRAIN
PRESION MAXIMA EN LINEA DE RETORNO SIN DRENAJE**



**CHARGES ADMISSIBLES SUR L'ARBRE
PERMISSIBLE SHAFT LOADS
CARGAS DEL EJE ADMISIBLE**



VERSIONS SPECIALES - SPECIAL VERSIONS - VERSIONES ESPECIALES

D: joint d'arbre - shaft seal - junta del eje: max 150 bar
N/D: arbre renforcé - with needle bearings - con rodamientos
W: moto-rue - wheel mount - versión rueda

MPS (MS)

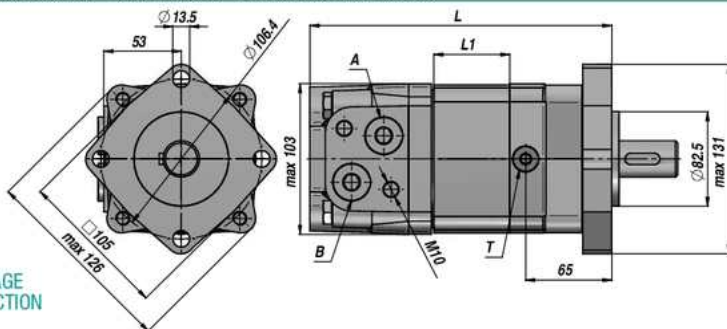
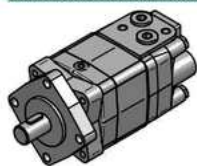


MOTEUR "M+S HYDRAULIC"
"M+S HYDRAULIC" MOTOR
MOTOR "M+S-HYDRAULIC"

ARBRE CYLINDRIQUE Ø32
PARALLEL SHAFT Ø32
EJE CILINDRICO Ø32

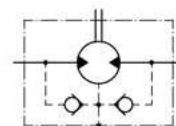
BRIDE "SAE A" - 4 TROUS
"SAE A" FLANGE - 4 HOLES
BRIDA "SAE A" - 4 ORIFICIOS

Standard: ALIMENTATIONS LATÉRALES - SIDE PORTS - ENTRADAS LATÉRALES



CLAPET ANTI-RETOUR INTEGRE
BUILT-IN CHECK VALVES
VALVULAS DE RETENCION INTEGRADAS

PREDISPOSITION POUR DRAINAGE
MACHINED FOR DRAIN CONNECTION
PREPARADO PARA DRENAJE



Code Code Código	Type Type Tipo	cm ³ /tr cm ³ /rev cm ³ /giro	n. Max tour/min rpm giro/min	M Max daNm	Q MAX l/min	P MAX bar			A - B	T	L	L1	kg
						Chute Drop Delta Δp	Entrée Inlet En entrada	Retour Return Retorno					
TRAVAIL EN CONTINU - CONTINUOUS WORK - TRABAJO EN CONTINUO													
MPS080NC32	MPS 80 C	80,5	810	24,0	65	210	230	140 *			168	14,0	9,90
MPS100NC32	MPS 100 C	100,0	750	30,5	75	210	230	140 *			171	17,4	10,10
MPS125NC32	MPS 125 C	125,7	600	37,5	75	210	230	140 *			176	21,8	10,40
MPS160NC32	MPS 160 C	159,7	470	49,0	75	210	230	140 *			182	27,8	10,80
MPS200NC32	MPS 200 C	200,0	375	61,0	75	210	230	140 *			189	34,8	11,20
MPS250NC32	MPS 250 C	250,0	300	72,0	75	200	230	140 *	1/2"	1/4"	197	43,5	11,70
MPS315NC32	MPS 315 C	314,9	240	82,5	75	200	230	140 *			209	54,8	12,40
MPS400NC32	MPS 400 C	397,0	190	86,5	75	160	230	140 *			223	69,4	13,10
MPS475NC32	MPS 475 C	474,6	160	85,0	75	130	230	140 *			237	82,6	14,10
MPS525NC32	MPS 525 C	522,7	145	85,0	75	115	230	140 *			229	74,5	14,60
MPS565NC32	MPS 565 C	564,9	130	85,0	75	105	230	140 *			235	80,2	15,00

* = AVEC DRAINAGE - WITH DRAIN - CON DRENAJE

OPTION	OPTION	OPTION	PRESSION MAXI EN RETOUR SANS DRAINAGE MAX. RETURN PRESSURE WITHOUT DRAIN PRESION MAXIMA EN LINEA DE RETORNO SIN DRENAJE
<p>CO</p>	<p>Q: (Square Mount)</p>	<p>E: ALIMENTATIONS ARRIERES REAR PORTS ENTRADAS POSTERIORES</p>	
<p>K</p>	<p>F: SAE A/4 (Oval Mount)</p>	<p>CHARGES ADMISSIBLES SUR L'ARBRE PERMISSIBLE SHAFT LOADS CARGAS DEL EJE ADMISIBLE</p>	
<p>SH</p>			
<p>SL</p>			

Arbre - Shaft - Eje : "C-CO-K-SH-SL"

Prad = Charge radiale - Radial load - Carga radial
Pa = Charge axiale - Axial load - Carga axial

Prad :
Charge radiale sur le roulement B10 avec 2000 heures de activité a 100 tour/min. - Pa=0 da N
Radial shaft load apply to a B10 bearing life of 2000 hours at 100 rpm. - Pa=0 da N
Carga radial sobre el rodamiento B10 con 2000 horas de trabajo a 200 giro/min. - Pa=0 da N

Pa max = 500 daN

VERSIONS SPECIALES - SPECIAL VERSIONS - VERSIONES ESPECIALES

- W: moto-rue - wheel mount - versión rueda
- B: avec frein a tambour - with drum brake - con tambor freno
- S/V: versions courtes - short versions - versiones cortas

MOTEUR "M+S HYDRAULIC"
"M+S HYDRAULIC" MOTOR
MOTOR "M+S HYDRAULIC"

ARBRE CYLINDRIQUE Ø40
PARALLEL SHAFT Ø40
EJE CILINDRICO Ø40

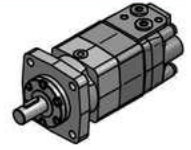
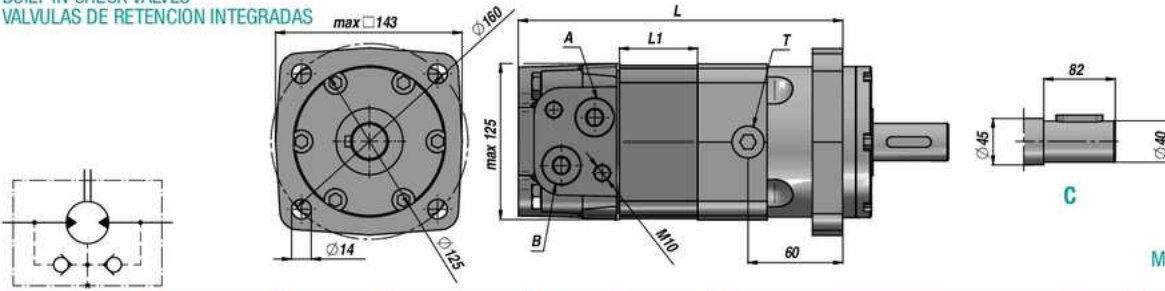
BRIDE CARREE - 4 TROUS
SQUARE FLANGE - 4 HOLES
BRIDA CUADRADA - 4 ORIFICIOS



MPT (MT)

Standard: ALIMENTATIONS LATERALES - SIDE PORTS - ENTRADAS LATERALES

CLAPET ANTI-RETOUR INTEGRE
BUILT-IN CHECK VALVES
VALVULAS DE RETENCION INTEGRADAS



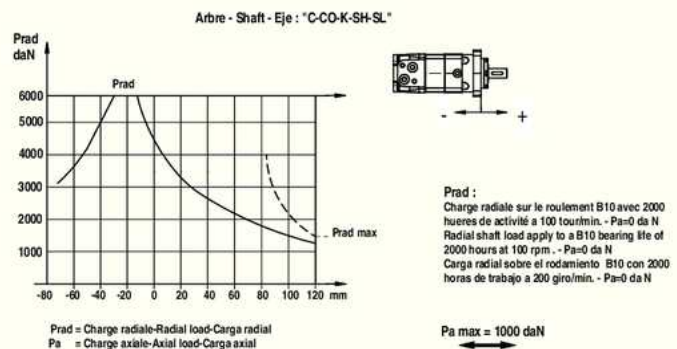
PREDISPOSITION POUR DRAINAGE
MACHINED FOR DRAIN CONNECTION
PREPARADO PARA DRENAJE

Code Code Código	Type Type Tipo	cm ³ /tr cm ³ /rev cm ³ /giro	n. Max tour/min rpm giro/min	M Max daNm	Q MAX l/min	P MAX bar			A - B	T	L	L1	kg
						Chute Drop Delta Δp	Entrée Inlet En entrada	Retour Return Retorno					
TRAVAIL EN CONTINU - CONTINUOUS WORK - TRABAJO EN CONTINUO													
MPT160NC40	MPT 160 C	161,1	622	47	100	200	210	140 *	3/4"	1/4"	190	16,5	20,00
MPT200NC40	MPT 200 C	201,4	620	59	125	200	210	140 *			195	21,5	20,50
MPT250NC40	MPT 250 C	251,8	496	73	125	200	210	140 *			201	27,8	21,00
MPT315NC40	MPT 315 C	326,3	382	95	125	200	210	140 *			211	37,0	22,00
MPT400NC40	MPT 400 C	410,9	304	108	125	180	210	140 *			221	47,5	23,00
MPT500NC40	MPT 500 C	523,6	238	122	125	160	210	140 *			235	61,5	24,00
MPT630NC40	MPT 630 C	631,2	197	130	125	140	210	140 *			231	57,5	24,00
MPT725NC40	MPT 725 C	724,3	172	127	125	120	210	140 *	240	66,5	24,50		

* = AVEC DRAINAGE - WITH DRAIN - CON DRENAJE

OPTION	OPTION	OPTION	PRESSION MAXI EN RETOUR SANS DRAINAGE MAX. RETURN PRESSURE WITHOUT DRAIN PRESION MAXIMA EN LINEA DE RETORNO SIN DRENAJE
<p>CO</p>	<p>W: (Wheel Mount)</p>	<p>E: ALIMENTATIONS ARRIERES REAR PORTS ENTRADAS POSTERIORES</p>	
<p>K</p>			
<p>SH</p>			
<p>SL</p>			

**CHARGES ADMISSIBLES SUR L'ARBRE
PERMISSIBLE SHAFT LOADS
CARGAS DEL EJE ADMISIBLE**



VERSIONS SPECIALES - SPECIAL VERSIONS - VERSIONES ESPECIALES

- W: moto-rue - wheel mount - versión rueda
- S/V: versions courtes - short versions - versiones cortas
- M: version renforcée - reinforced version - versión reforzada

MPV (MV)

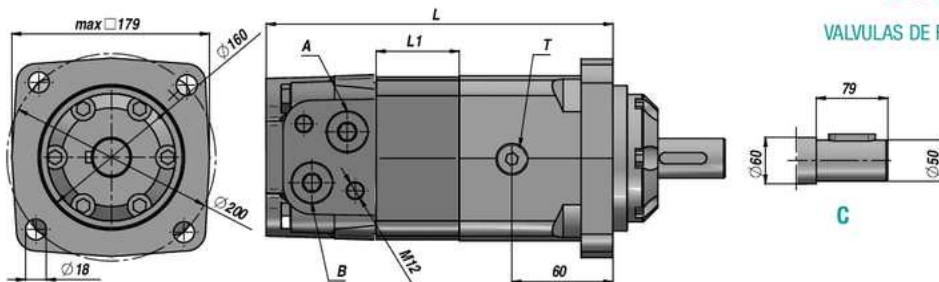


MOTEUR "M+S HYDRAULIC"
"M+S HYDRAULIC" MOTOR
MOTOR "M+S HYDRAULIC"

ARBRE CYLINDRIQUE Ø50
PARALLEL SHAFT Ø50
EJE CILINDRICO Ø50

BRIDE CARREE - 4 TROUS
SQUARE FLANGE - 4 HOLES
BRIDA CUADRADA - 4 ORIFICIOS

Standard: ALIMENTATIONS LATÉRALES - SIDE PORTS - ENTRADAS LATÉRALES



CLAPET ANTI-RETOUR INTEGRE
BUILT-IN CHECK VALVES
VALVULAS DE RETENCION INTEGRADAS

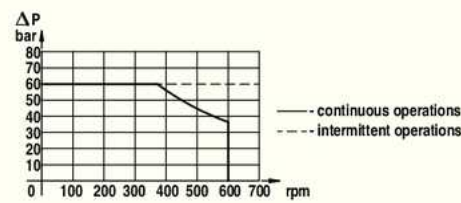
PREDISPOSITION POUR DRAINAGE
MACHINED FOR DRAIN CONNECTION
PREPARADO PARA DRENAJE

Code Code Código	Type Type Tipo	cm ³ /tr cm ³ /rev cm ³ /giro	n. Max tour/min rpm giro/min	M Max daNm	Q MAX l/min	P MAX bar			A - B	T	L	L1	kg	
						Chute Drop Delta Δp	Entrée Inlet En entrada	Retour Return Retorno						
TRAVAIL EN CONTINU - CONTINUOUS WORK - TRABAJO EN CONTINUO														
MPV315C000	MPV 315 C	314,5	510	92	160	200	210	140 *			214,5	22,0	31,80	
MPV400C000	MPV 400 C	400,9	500	118	200	200	210	140 *			221,5	29,0	32,60	
MPV500C000	MPV 500 C	499,6	400	146	200	200	210	140 *	1"	1/4"	229,5	37,0	33,50	
MPV630C000	MPV 630 C	629,1	320	166	200	180	210	140 *			240	47,5	34,90	
MPV800C000	MPV 800 C	801,8	250	188	200	160	210	140 *			254	61,5	36,50	

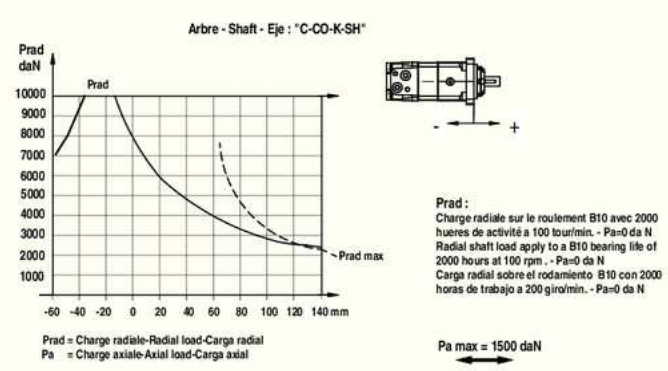
* = AVEC DRAINAGE - WITH DRAIN - CON DRENAJE

OPTION	OPTION
<p>CO</p>	<p>W: (Wheel Mount)</p>
<p>K</p>	<p>C: SAE C Mount</p>
<p>SH</p>	

PRESSION MAXI EN RETOUR SANS DRAINAGE
MAX. RETURN PRESSURE WITHOUT DRAIN
PRESION MAXIMA EN LINEA DE RETORNO SIN DRENAJE



CHARGES ADMISSIBLES SUR L'ARBRE
PERMISSIBLE SHAFT LOADS
CARGAS DEL EJE ADMISIBLE



VERSIONS SPECIALES - SPECIAL VERSIONS - VERSIONES ESPECIALES

W: moto-rue - wheel mount - versión rueda
S/V: versions courtes - short versions - versiones cortas