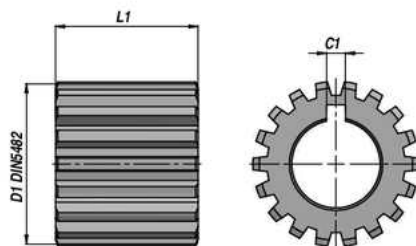


BF

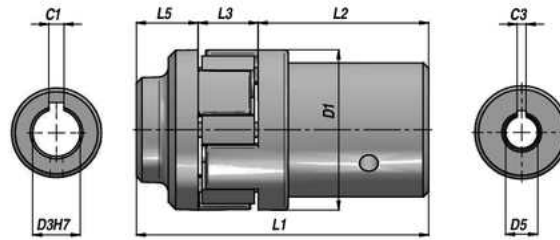
NOIX D'ACCOUPLMENT
SPLINED COUPLING
ACOPLAMIENTO ESTRIADO



Code Code Código	Type Type Tipo	Pompe Pump Bomba	C1	D1 DIN 5482	Nr. dents Teeth Nr. Nr. Estrias	Conicité Taper Conicidad	L1	kg
BF31000400	BF1-1	GR.1	2,40	20x17	12	1:8	14,5	0,02
BF31001000	BF2/1-1	GR.1	2,40	25x22	14		14,5	0,02
BF31000700	BF2	GR.2	3,17	"	"		22	0,03
BF31000800	BF2T	GR.2T	4,00	"	"		22,5	0,04
BF31001900	BF2 Z15	GR.2	3,17	28x25	15		22	0,05
BF31002000	BF2T Z15	GR.2T	4,00	"	"		22,5	0,06
BF31003300	BF2,5/2	GR.2	3,17	32x28	17		22	0,08
BF31003000	BF2,5/2T	GR.2T	4,00	"	"		22,5	0,08
BF31002300	BF2,5	GR.3	4,00	"	"		26	0,07
BF31003900	BF3/2	GR.2	3,17	35x31	18		22	0,11
BF31004000	BF3/2T	GR.2T	4,00	"	"		22,5	0,11
BF31003500	BF3	GR.3	4,00	"	"		26	0,10
BF31005600	BF3,5/2	GR.2	3,17	40x36	20		22	0,15
BF31006200	BF3,5/2T	GR.2T	4,00	"	"		22,5	0,15
BF31005800	BF3,5/3	GR.3	4,00	"	"		26	0,15
BF31005400	BF3,5	GR.3,5	4,80	"	"		32	0,16
BF31007000	BF4/2	GR.2	3,17	48x44	23		22	0,24
BF31007100	BF4/2T	GR.2T	4,00	"	"	22,5	0,24	
BF31007200	BF4/3	GR.3	4,00	"	"	26	0,26	
BF31007300	BF4/3,5	GR.3,5	4,80	"	"	32	0,30	
BF31006600	BF4	GR.4	6,40	"	"	42	0,29	

ACCOUPLMENT ELASTIQUE
FLEXIBLE COUPLING
ACOPLAMIENTO ELASTICO

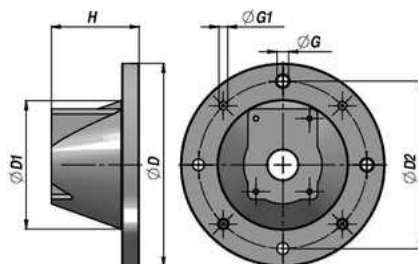
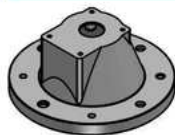
HE



Code Code Código	Type Type Tipo	D1	L1	Moteur Electrique - Electric Motor - Motor Eléctrico				L3	Pompe - Pump - Bomba				kg
				kW	ØD3	C1	L2		GR.	D5	C3	L5	
BH10200002	HE2	43	62	0,25 - 0,37	14	5	29,5	16	GR.1	1:8	2,4	16,5	0,12
BH10200020	HE22	43	81	0,55 - 0,75	19	6	45,5	16	GR.T05	ø7	2,0	19,5	0,16
BH10200006	HE6	43	78	"	"	6	45,5	16	GR.1	1:8	2,4	16,5	0,16
BH10200042	HE46	63	85,5	"	"	6	44,5	19	GR.2	1:8	3,2	22	0,32
BH10200043	HE47	63	85,5	"	"	6	44,5	19	GR.2T	1:8	4,0	22	0,32
BH10200037	HE41	63	78	1,10 - 1,50	24	8	36	19	GR.1	1:8	2,4	23	0,30
BH10200012	HE14	63	85,5	"	"	8	44,5	19	GR.2	1:8	3,2	22	0,34
BH10200013	HE15	63	85,5	"	"	8	44,5	19	GR.2T	1:8	4,0	22	0,34
BH10200014	HE16	63	106,5	2,20 - 3 - 4	28	8	64,5	19	GR.1	1:8	2,4	23	0,43
BH10200017	HE19	63	105,5	"	"	8	64,5	19	GR.2	1:8	3,2	22	0,44
BH10200018	HE20	63	105,5	"	"	8	64,5	19	GR.2T	1:8	4,0	22	0,44
BH10200084	HE48	63	119,5	"	"	8	64,5	19	GR.3	1:8	4,0	36	0,48
BH10200024	HE28	86	134	5,50 - 7,50	38	10	79	23	GR.2	1:8	3,2	32	0,86
BH10200025	HE29	86	134	"	"	10	79	23	GR.2T	1:8	4,0	32	0,86
BH10200026	HE30	86	134	"	"	10	79	23	GR.3	1:8	4,0	32	0,93
BH10200027	HE31	86	133,5	"	"	10	79	23	GR.3,5	1:8	4,8	31,5	0,91
BH10200028	HE32	110	174	11 - 15	42	12	105	27	GR.2	1:8	3,2	42	1,54
BH10200029	HE33	110	174	"	"	12	105	27	GR.2T	1:8	4,0	42	1,54
BH10200030	HE34	110	174	"	"	12	105	27	GR.3	1:8	4,0	42	1,57
BH10200031	HE35	110	174	"	"	12	105	27	GR.3,5	1:8	4,8	42	1,56
BH10200032	HE36	110	174	"	"	12	105	27	GR.4	1:8	6,4	42	1,60
BH10200033	HE37	110	174	18,50 - 22	48	14	105	27	GR.3	1:8	4,0	42	1,61
BH10200034	HE38	110	174	"	"	14	105	27	GR.3,5	1:8	4,8	42	1,60
BH10200035	HE39	110	174	"	"	14	105	27	GR.4	1:8	6,4	42	1,73

HL

LANTERNE POUR MOTEUR ELECTRIQUE
BELL-HOUSING TO CONNECT ELECTRIC MOTOR
CAMPANA DE CONEXION AL MOTOR ELECTRICO

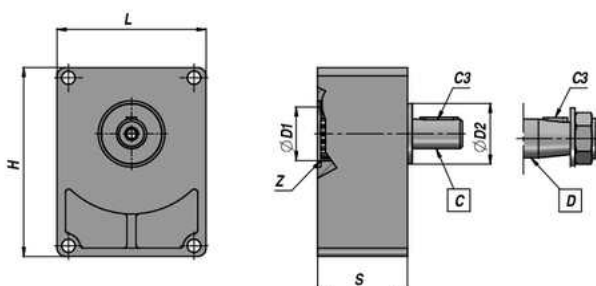


Code Code Código	Type Type Tipo	ØD	Moteur Electric Electric Motor Motor Electrico kW	Pompe Pump Bomba	ØD1	H	ØG	ØG1	ØD2	kg
AH30100200	HL2	160	0,27 - 0,37	GR.1	110	70	9	M8	130	0,44
AH30202800	HL5L	"	0,55 - 0,75 - 1,1 - 1,5	GR.1	130	86	11,5	M10	165	0,67
AH30203500	HL7SL	"	"	GR.2/2T	130	95	11,5	M10	165	0,65
AH30302500	HL8/1L	250	2,2 - 3 - 4	GR.1	176	115	13	M12	215	1,22
AH30302600	HL9L	"	"	GR.2/2T	176	115	13	M12	215	1,21
AH15050005	HL11	"	"	GR.3	176	130	13	M12	215	1,20
AH30400800	HL12	300	5,5 - 7,5	GR.2/2T	229	148	13	M12	265	1,99
AH30400900	HL13	"	"	GR.3	229	148	13	M12	265	1,99
AH15000001	HL15	350	11 - 15	GR.2/2T	210	187	18	Ø18	300	3,38
AH30509200	HL16	"	11 - 15 - 18,5 - 22	GR.3	210	187	18	Ø18	300	3,38

DISPONIBLES AVEC BAGUE DE REDUCTION - ALSO AVAILABLE WITH ADAPTER RING - TAMBIEN DISPONIBLES CON ANILLO DE REDUCCION

STSU

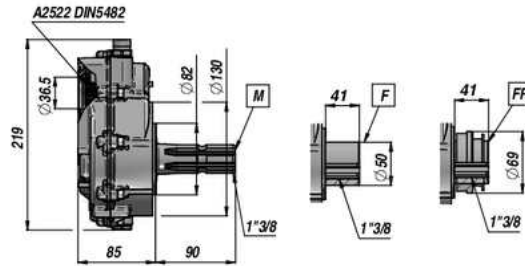
CONTRE PALIERS
BELT PULLEY SUPPORT
SOPORTES DE CORREA DE TRANSMISION



Code Code Código	Type Type Tipo	Pompe Pump Bomba	ØD1	Z DIN 5482	ØD2	Arbre Shaft Eje	C3	L	H	S	kg
BU12010002	STSU/1 - C	GR.1	25,4	Z14 - 25x22	50,8	C = Ø18	6x6x25	75	93	40	0,80
BU12020001	STSU/2 - C	GR.2	36,5	Z14 - 25x22	36,5	C = Ø18	6x6x30	89,4	114	54,5	1,40
BU12020007	STSUR/2 - C	GR.2	36,5	Z15 - 28x25	50,8	C = Ø22	6x6x40	89,4	114	52	1,75
BU12030001	STSU/3 - C	GR.3	50,8	Z18 - 35x31	50,8	C = Ø24	8x7x40	123,5	153,2	52	2,20
BU12010001	STSU/1 - D	GR.1	25,4	Z14 - 25x22	50,8	D = Conique Tapered Cónico 1:8	4 x 6,5	75	93	40	0,80
BU12020004	STSU/2 - D	GR.2	36,5	Z14 - 25x22	36,5		4 x 6,5	89,4	114	54,5	1,40
BU12020008	STSUR/2 - D	GR.2	36,5	Z15 - 28x25	50,8		4 x 6,5	89,4	114	52	1,75
BU12030002	STSU/3 - D	GR.3	50,8	Z18 - 35x31	50,8		4 x 7,5	123,5	153,2	52	2,20

MULTIPLICATEUR POUR POMPE GR. 2
P.T.O. GEAR BOX FOR GR. 2 PUMP
MULTIPLICADOR PARA BOMBA DE GRUPO 2

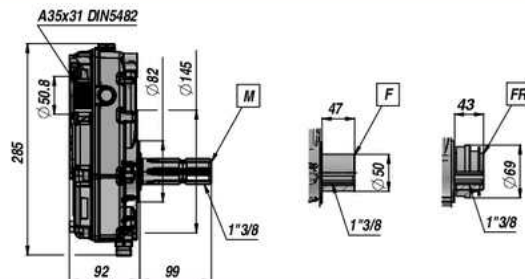
GBML32



Code Code Código	Type Type Tipo	Arbre Shaft Eje	Rapport Ratio Proporción	kg
BM60001010	GBML32 - M - 1 / 1,5	Mâle Male Macho 1"3/8 SAE J 1170	1,5	5,30
BM60001020	GBML32 - M - 1 / 2,0		2,0	5,30
BM60001030	GBML32 - M - 1 / 2,5		2,5	5,30
BM60001040	GBML32 - M - 1 / 3,0		3,0	5,30
BM60001050	GBML32 - M - 1 / 3,5		3,5	5,30
BM60001060	GBML32 - M - 1 / 3,8		3,8	5,30
BM60002010	GBML32 - F - 1 / 1,5	Femelle Female Hembra 1"3/8 SAE J 1170	1,5	4,50
BM60002020	GBML32 - F - 1 / 2,0		2,0	4,50
BM60002030	GBML32 - F - 1 / 2,5		2,5	4,50
BM60002040	GBML32 - F - 1 / 3,0		3,0	4,50
BM60002050	GBML32 - F - 1 / 3,5		3,5	4,50
BM60002060	GBML32 - F - 1 / 3,8		3,8	4,50
BM60004040	GBML32 - FR - 1 / 3,0	Femelle FR Female FR Hembra FR 1"3/8 SAE J 1170	3,0	4,70
BM60004050	GBML32 - FR - 1 / 3,5		3,5	4,70
BM60004060	GBML32 - FR - 1 / 3,8		3,8	4,70

MULTIPLICATEUR POUR POMPE GR. 3
P.T.O. GEAR BOX FOR GR. 3 PUMP
MULTIPLICADOR PARA BOMBA DE GRUPO 3

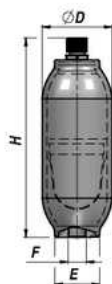
GBML52



Code Code Código	Type Type Tipo	Arbre Shaft Eje	Rapport Ratio Proporción	kg
BM70001030	GBML52 - M - 1 / 2,6	Mâle Male Macho 1"3/8 SAE J 1170	2,6	7,90
BM70001040	GBML52 - M - 1 / 3,0		3,0	7,90
BM70001050	GBML52 - M - 1 / 3,4		3,4	7,90
BM70001060	GBML52 - M - 1 / 3,8		3,8	9,20
BM70002015	GBML52 - F - 1 / 1,5	Femelle Female Hembra 1"3/8 SAE J 1170	1,5	7,10
BM70002020	GBML52 - F - 1 / 2,0		2,0	7,10
BM70002030	GBML52 - F - 1 / 2,6		2,6	7,10
BM70002040	GBML52 - F - 1 / 3,0		3,0	7,10
BM70002050	GBML52 - F - 1 / 3,4		3,4	7,10
BM70002060	GBML52 - F - 1 / 3,8		3,8	8,40
BM70004040	GBML52 - FR - 1 / 3,0	Femelle FR Female FR Hembra FR 1"3/8 SAE J 1170	3,0	7,30
BM70004060	GBML52 - FR - 1 / 3,8		3,8	8,60

H

ACCUMULATEUR HYDRAUPNEUMATIQUE
HYDROPNEUMATIC ACCUMULATOR
ACUMULADOR HIDRO-NEUMATICO



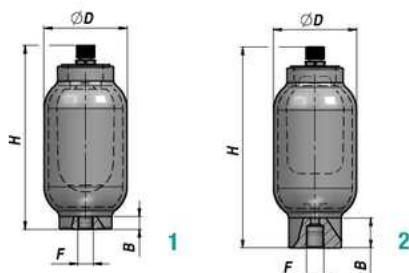
Code Code Código	Type Type Tipo	Azote Nitrogen Nitrógeno	Q MAX l/min	P MAX bar	H	ØD	E	F	kg
ACH000100	H 100 R	lt 0,15	40	250	142	70	45	M18x1,5	1,20
ACH000350	H 350 R	lt 0,35	35	250	205	70	35	M18x1,5	1,70
ACH000500	H 500 R	lt 0,45	50	250	167	92	55	M18x1,5	1,90
ACH000700	H 700 R	lt 0,70	40	250	220	92	40	M18x1,5	2,70
ACH0001000	H 1000 R	lt 1,00	50	250	200	115	60	M18x1,5	3,50
ACH0001400	H 1400 R	lt 1,40	40	250	270	115	60	M18x1,5	4,90
ACH0002000	H 2000 R	lt 2,00	40	250	350	115	60	M18x1,5	5,80
ACH0004000	H 4000 R	lt 3,80	80	210	320	170	95	3/4" BSP	14,00

Température C° - Temperature C° - Temperatura C°: -20°C - +80°C
MATERIEL - MATERIAL: CORPS - BODY - CUERPO: ACIER - STEEL - ACERO

MEMBRANE - DIAPHRAGM - MEMBRANA: NBR

HTR

ACCUMULATEUR HYDRAUPNEUMATIQUE
HYDROPNEUMATIC ACCUMULATOR
ACUMULADOR HIDRO-NEUMATICO



Code Code Código	Type Type Tipo	Dessin Drawing Diseño	Azote Nitrogen Nitrógeno	Q MAX l/min	P MAX bar	H	ØD	B	F	kg
ACHTR00350	HTR 0,35	1	lt 0,35	45	250	155	93	20	M18x1,5	2,50
ACHTR00700	HTR 0,7	1	lt 0,75	40	250	220	93	20	M18x1,5	3,70
ACHTR01500	HTR 1,5	1	lt 1,50	40	250	280	115	25	M18x1,5	5,30
ACHTR02500	HTR 2,5	2	lt 2,50	110	250	483	115	50	3/4" BSP	11,50
ACHTR04501	HTR 4,5	2	lt 4,50	400	210	395	170	80	1"1/4 BSP	15,00
ACHTR06500	HTR 6,5	2	lt 6,50	350	210	520	170	60	1"1/4 BSP	24,00
ACHTR10000	HTR 10	2	lt 10,00	300	210	760	170	80	1"1/4 BSP	31,00
ACHTR20000	HTR 20	2	lt 19,50	600	150	845	220	110	2" BSP	59,00
ACHTR35000	HTR 35	2	lt 35,00	540	150	1500	220	110	2" BSP	90,00
ACHTR50000	HTR 50	2	lt 50,00	500	150	1990	220	110	2" BSP	121,00

Température C° - Temperature C° - Temperatura C°: -20°C - +80°C
MATERIEL - MATERIAL: CORPS - BODY - CUERPO: ACIER - STEEL - ACERO

VESSIE - BLADDER - BOLSA: NBR

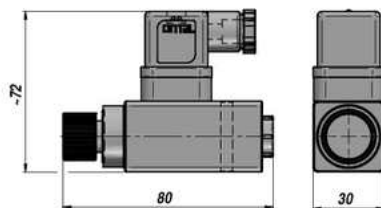
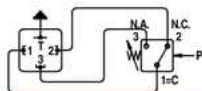
SUR DEMANDE:
UNITE DE TARAGE ET CONTROLE PRESSION

ON REQUEST:
FILLING AND TESTING UNIT

BAJO PEDIDO:
EQUIPO DE REGULACION Y CONTROL DE PRESION

PRESSOSTAT
PRESSURE SWITCH
PRESOSTATO

F5

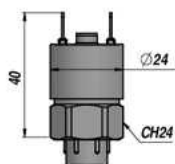
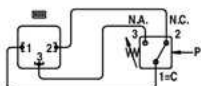


Code Code Código	Type Type Tipo	Orifice Thread Rosca BSP	Plage de Réglage Setting Range Galgas de Reglaje	P MAX bar	Exécution Execution Ejecución	kg
APIF530000	F53		5 > 50 bar	300	Piston	0,15
APIF550000	F55	1/4"	15 > 150 bar	350	Piston	0,15
APIF570000	F57		30 > 300 bar	400	Piston	0,15

MATERIEL - MATERIAL: CORPS - BODY - CUERPO: ALUMINIUM - ALUMINIO

PRESSOSTAT
PRESSURE SWITCH
PRESOSTATO

F4

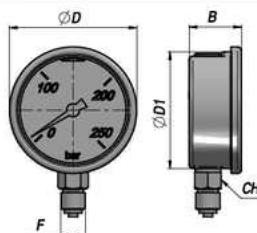


Code Code Código	Type Type Tipo	Orifice Thread Rosca BSP	Plage de Réglage Setting Range Galgas de Reglaje	P MAX bar	Exécution Execution Ejecución	kg
APIF4R10P2	F4R-1-P2		0,2 > 2,5 bar	25	Membrane	0,05
APIF4S10P2	F4S-1-P2		1 > 12 bar	25	Membrane	0,05
APIF4T10P2	F4T-1-P2	1/4"	5 > 50 bar	300	Piston	0,05
APIF4V10P2	F4V-1-P2		10 > 100 bar	300	Piston	0,05
APIF4Z10P2	F4Z-1-P2		20 > 200 bar	300	Piston	0,05

MATERIEL - MATERIAL: CORPS - BODY - CUERPO: ACIER - STEEL - ACERO

MANOMETRE EN BAIN DE GLYCERINE - FIXATION RADIALE
GLYCERINE PRESSURE GAUGE - RADIAL FITTING
MANOMETRO DE PRESION DE GLICERINA - CONEXION RADIAL

AMGR

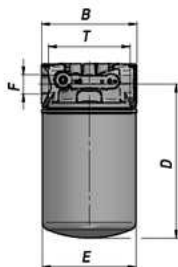


Code Code Código	ØD1	F BSP	Echelle bar Range bar Escala bar	B	CH	ØD	kg
AMGR063010			0 / 10				0,20
AMGR063025			0 / 25				0,20
AMGR063060			0 / 60				0,20
AMGR063100			0 / 100				0,20
AMGR063160	62,6	1/4"	0 / 160	28	14	68	0,20
AMGR063250			0 / 250				0,20
AMGR063400			0 / 400				0,20
AMGR063600			0 / 600				0,20

MATERIEL - MATERIAL: BOITER INOX - STAINLESS STEEL CASING - CARCASA DE ACERO INOXIDABLE

FACA

FILTRE ASPIRATION EN LIGNE "SPIN-ON" IN-LINE SUCTION "SPIN-ON" FILTER FILTRO DE ASPIRACION EN LINEA "SPIN-ON"



CA

CARTOUCHE ELEMENT CARTUCHO

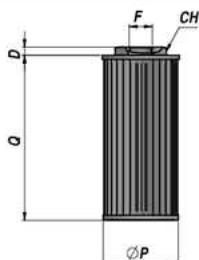


Code Code Código	Type Type Tipo	l/min	F BSP	Micron	B	D	E	T	kg
AFACA06010	FACA 60/1-P	20	3/4"	10	95	172	96	75	1,00
AFACA06030	FACA 60/3-P	25	"	30	"	"	"	"	1,00
AFACA06060	FACA 60/6-P	30	"	60	"	"	"	"	1,00
AFACA08010	FACA 80/1-P	25	"	10	95	232	96	75	1,10
AFACA08030	FACA 80/3-P	30	"	30	"	"	"	"	1,10
AFACA08060	FACA 80/6-P	35	"	60	"	"	"	"	1,10
AFACA16010	FACA 160/1-P	70	1"1/4	10	132	215	126	112	2,00
AFACA16030	FACA 160/3-P	80	"	30	"	"	"	"	2,00
AFACA16060	FACA 160/6-P	80	"	60	"	"	"	"	2,00
AFACA20010	FACA 200/1-P	90	"	10	132	263	126	112	2,00
AFACA20030	FACA 200/3-P	100	"	30	"	"	"	"	2,00
AFACA20060	FACA 200/6-P	100	"	60	"	"	"	"	2,00

Code Code Código	Type Type Tipo	ØP	Q	kg
AFCA006010	CA 60/1	96	146	0,60
AFCA006030	CA 60/3	"	"	0,60
AFCA006060	CA 60/6	"	"	0,85
AFCA008010	CA 80/1	96	209	0,70
AFCA008030	CA 80/3	"	"	0,70
AFCA008060	CA 80/6	"	"	0,95
AFCA016010	CA 160/1	128	181	1,15
AFCA016030	CA 160/3	"	"	1,15
AFCA016060	CA 160/6	"	"	1,30
AFCA020010	CA 200/1	128	226	1,42
AFCA020030	CA 200/3	"	"	1,42
AFCA020060	CA 200/6	"	"	1,58

FIOA

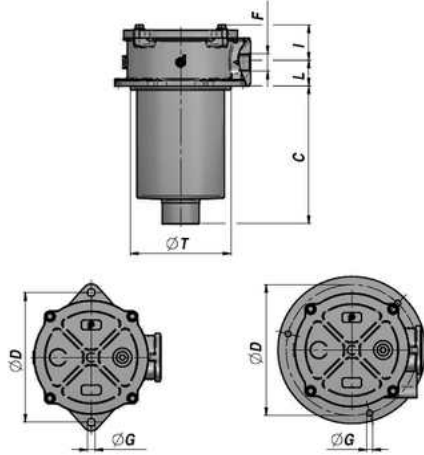
CREPINES ASPIRATION THREADED SUCTION FILTER FILTRO DE ASPIRACION ROSCADO



Code Code Código	Type Type Tipo	l/min	F BSP	Micron	ØP	Q	D	CH	kg
AFIOA02030	FIOA 20/3	5	3/8"	30	52	68	9	22	0,10
AFIOA02060	FIOA 20/6	10	"	60	"	"	"	"	0,10
AFIOA02090	FIOA 20/9	10	"	90	"	"	"	"	0,10
AFIOA03530	FIOA 35/3	9	1/2"	30	69	76	12	27	0,16
AFIOA03560	FIOA 35/6	17	"	60	"	"	"	"	0,16
AFIOA03590	FIOA 35/9	17	"	90	"	"	"	"	0,16
AFIOA05030	FIOA 50/3	13	3/4"	30	75	83	12	36	0,20
AFIOA05060	FIOA 50/6	25	"	60	"	"	"	"	0,20
AFIOA05090	FIOA 50/9	25	"	90	"	"	"	"	0,20
AFIOA09030	FIOA 90/3	25	1"	30	75	131	10	46	0,50
AFIOA09060	FIOA 90/6	45	"	60	"	"	"	"	0,50
AFIOA09090	FIOA 90/9	45	"	90	"	"	"	"	0,50
AFIOA13030	FIOA 130/3	35	1"1/4	30	95	172	12	60	0,68
AFIOA13060	FIOA 130/6	65	"	60	"	"	"	"	0,68
AFIOA13090	FIOA 130/9	65	"	90	"	"	"	"	0,68

FILTRE RETOUR SEMI PLONGE
RETURN-LINE FILTER
FILTRO DE RETORNO EN LINEA

FIO



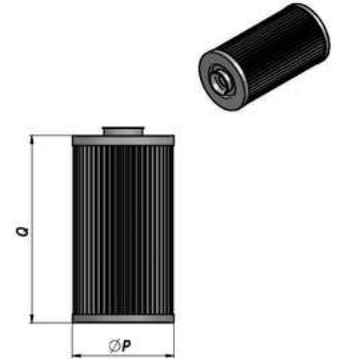
FIO 30-100

FIO 180

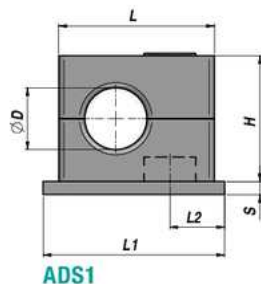
Code Code Código	Type Type Tipo	l/min	F BSP	Micron	ØT	C	L	I	ØD	ØG	kg
AFIO030030	FIO 30/3-P	20	1/2"	30	67	78	22	30	90	6,4	0,50
AFIO030060	FIO 30/6-P	30	"	60	"	"	"	"	"	"	0,50
AFIO030000	FIO 30/9-P	30	"	90	"	"	"	"	"	"	0,50
AFIO050030	FIO 50/3-P	35	1/2"	30	90	100	28	43	115	8,4	0,80
AFIO050060	FIO 50/6-P	50	"	60	"	"	"	"	"	"	0,80
AFIO050000	FIO 50/9-P	50	"	90	"	"	"	"	"	"	0,80
AFIO080030	FIO 80/3-P	55	3/4"	30	90	150	28	43	115	8,4	0,90
AFIO080060	FIO 80/6-P	80	"	60	"	"	"	"	"	"	0,90
AFIO080000	FIO 80/9-P	80	"	90	"	"	"	"	"	"	0,90
AFIO100030	FIO 100/3-P	65	1"	30	90	150	28	43	115	8,4	0,90
AFIO100060	FIO 100/6-P	100	"	60	"	"	"	"	"	"	0,90
AFIO100000	FIO 100/9-P	100	"	90	"	"	"	"	"	"	0,90
AFIO180030	FIO 180/3-P	100	1"1/4	30	130	230	35	53	175	10,5	2,50
AFIO180060	FIO 180/6-P	150	"	60	"	"	"	"	"	"	2,50
AFIO180000	FIO 180/9-P	150	"	90	"	"	"	"	"	"	2,50

CARTOUCHE
ELEMENT
CARTUCHO

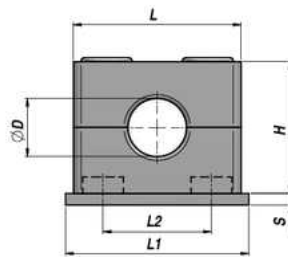
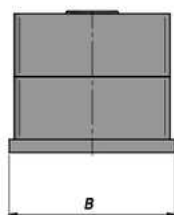
CR



Code Code Código	Type Type Tipo	ØP	Q	kg
AFCR030030	CR 30/3	52	67	0,13
AFCR030060	CR 30/6	"	"	0,12
AFCR030000	CR 30/9	"	"	0,14
AFCR050030	CR 50/3	70	75	0,21
AFCR050060	CR 50/6	"	"	0,22
AFCR050000	CR 50/9	"	"	0,22
AFCR100030	CR 100/3	70	128	0,30
AFCR100060	CR 100/6	"	"	0,27
AFCR100000	CR 100/9	"	"	0,33
AFCR100030	CR 100/3	70	128	0,30
AFCR100060	CR 100/6	"	"	0,27
AFCR100000	CR 100/9	"	"	0,33
AFCR180030	CR 180/3	95	203	0,70
AFCR180060	CR 180/6	"	"	0,57
AFCR180000	CR 180/9	"	"	0,76



ADS1



ADS2-6



Code Code Código	Type Type Tipo	Tube: ØD Pipe: ØD Tubo: ØD	Collier Clamp Abrazadera	L	H	Plaque Inf. - Plate - Base				kg x 100	
						Type Type -Tipo	L1	L2	B		S
ADS1006006	C1-06 PP + P/TCEI/RP/1	6	C1 - 06 PP							4,60	
ADS1000635	C1-06,4 PP + P/TCEI/RP/1	6,4	C1 - 06,4 PP							4,60	
ADS1008008	C1-08 PP + P/TCEI/RP/1	8	C1 - 08 PP							4,50	
ADS1000952	C1-09,5 PP + P/TCEI/RP/1	9,5	C1 - 09,5 PP	28	27	P1	32	10	30	3	4,40
ADS1010010	C1-10 PP + P/TCEI/RP/1	10	C1 - 10 PP								4,40
ADS1012012	C1-12 PP + P/TCEI/RP/1	12	C1 - 12 PP								4,30
ADS1000127	C1-12,7 PP + P/TCEI/RP/1	12,7	C1 - 12,7 PP								4,30
ADS2006006	C2-06 PP + P/TCEI/RP/2	6	C2 - 06 PP								6,70
ADS2000635	C2-06,4 PP + P/TCEI/RP/2	6,4	C2 - 06,4 PP								6,70
ADS2008008	C2-08 PP + P/TCEI/RP/2	8	C2 - 08 PP								6,60
ADS2000952	C2-09,5 PP + P/TCEI/RP/2	9,5	C2 - 09,5 PP	37	27	P2	41	20	30	3	6,50
ADS2010010	C2-10 PP + P/TCEI/RP/2	10	C2 - 10 PP								6,50
ADS2012012	C2-12 PP + P/TCEI/RP/2	12	C2 - 12 PP								6,40
ADS2000127	C2-12,7 PP + P/TCEI/RP/2	12,7	C2 - 12,7 PP								6,40
ADS3000127	C3-12,7 PP + P/TCEI/RP/3	12,7	C3 - 12,7 PP								7,70
ADS3000135	C3-13,5 PP + P/TCEI/RP/3	13,5	C3 - 13,5 PP								7,60
ADS2014014	C3-14 PP + P/TCEI/RP/3	14	C3 - 14 PP								7,60
ADS2015015	C3-15 PP + P/TCEI/RP/3	15	C3 - 15 PP	42	33	P3	47	26	30	3	7,50
ADS2016016	C3-16 PP + P/TCEI/RP/3	16	C3 - 16 PP								7,40
ADS3000172	C3-17,2 PP + P/TCEI/RP/3	17,2	C3 - 17,2 PP								7,30
ADS2018018	C3-18 PP + P/TCEI/RP/3	18	C3 - 18 PP								7,20
ADS3019019	C4-19 PP + P/TCEI/RP/4	19	C4 - 19 PP								9,10
ADS3020020	C4-20 PP + P/TCEI/RP/4	20	C4 - 20 PP								9,00
ADS4021321	C4-21,3 PP + P/TCEI/RP/4	21,3	C4 - 21,3 PP								8,90
ADS3022022	C4-22 PP + P/TCEI/RP/4	22	C4 - 22 PP	50	36	P4	54	33	30	3	8,80
ADS3023023	C4-23 PP + P/TCEI/RP/4	23	C4 - 23 PP								8,60
ADS3025025	C4-25 PP + P/TCEI/RP/4	25	C4 - 25 PP								8,40
ADS4025425	C4-25,4 PP + P/TCEI/RP/4	25,4	C4 - 25,4 PP								8,40
ADS4000269	C5-26,9 PP + P/TCEI/RP/5	26,9	C5 - 26,9 PP								10,20
ADS4028028	C5-28 PP + P/TCEI/RP/5	28	C5 - 28 PP								10,10
ADS4029029	C5-29 PP + P/TCEI/RP/5	29	C5 - 29 PP	57	42	P5	61	40	30	3	10,00
ADS4030030	C5-30 PP + P/TCEI/RP/5	30	C5 - 30 PP								9,90
ADS4032032	C5-32 PP + P/TCEI/RP/5	32	C5 - 32 PP								9,70
ADS5032032	C6-32 PP + P/TCEI/RP/6	32	C6 - 32 PP								15,20
ADS6000337	C6-33,7 PP + P/TCEI/RP/6	33,7	C6 - 33,7 PP								15,20
ADS6000350	C6-35 PP + P/TCEI/RP/6	35	C6 - 35 PP								15,10
ADS5038038	C6-38 PP + P/TCEI/RP/6	38	C6 - 38 PP	71	58	P6	73	52	30	3	14,90
ADS5040040	C6-40 PP + P/TCEI/RP/6	40	C6 - 40 PP								14,80
ADS6000424	C6-42 PP + P/TCEI/RP/6	42	C6 - 42 PP								14,60
ADS5045045	C6-45 PP + P/TCEI/RP/6	45	C6 - 45 PP								14,50

Le code comprend: collier C1-6...PP (polypropylène), plaque P1-6 (acier), vis TCEI1-6 et rondelles RP.

The part number is comprehensive of: C1-6...PP clamp (polypropilene), P1-6 plate (steel), TCEI1-6 screws and RP washers.

El código comprende: abrazadera C1-6...PP (polipropileno), base P1-6 (acero), tornillos TCEI1-6 y arandelas RP.