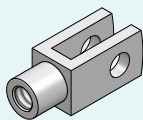
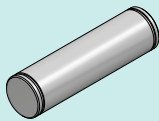
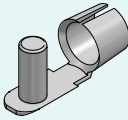
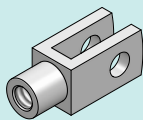
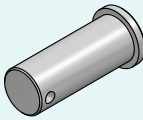
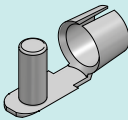
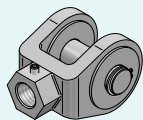
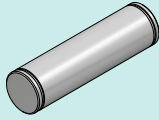
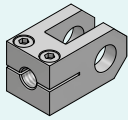
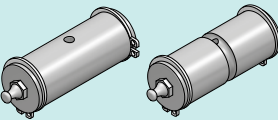


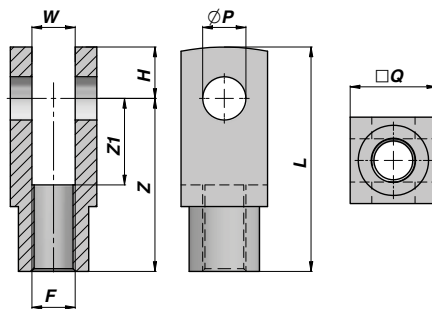
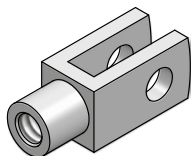
FORCELLE INDUSTRIALI INDUSTRIAL FORKS

		Descrizione - Description	Type	Page
	NEW!	FORCELLA FILETTATA - ISO 8140 THREADED FORKS - ISO 8140	CFFF00	152
	NEW!	PERNO PER FORCELLA - ISO 8140 CLEVIS PIN - ISO 8140	CPPF00	152
	NEW!	CLIP PER FORCELLA - ISO 8140 LOCKABLE PIN - ISO 8140	CSAF00	152
	NEW!	FORCELLA FILETTATA - DIN 71752 THREADED FORK - DIN 71752	CFFF	153
	NEW!	PERNO PER FORCELLA - UNI EN 22341/DIN 1434 CLEVIS PIN - UNI EN 22341/DIN 1434	CPPF	153
	NEW!	CLIP PER FORCELLA - DIN 71752 LOCKABLE PIN - DIN 71752	CSAF	153
	NEW!	FORCELLA FILETTATA CON PERNO - ISO 8133 THREADED FORK WITH PIN - ISO 8133	CSKLP	154
	NEW!	PERNO PER FORCELLA - ISO 8133 CLEVIS PIN - ISO 8133	CSKP	154
	NEW!	FORCELLA FILETTATA - ISO 8132 THREADED FORK - ISO 8132	CSIF	155
	NEW!	PERNO PER FORCELLA - ISO 8132 CLEVIS PIN - ISO 8132	CSKPC CSKPD	155

CFFF00

NEW!

FORCELLA FILETTATA - ISO 8140
THREADED FORKS - ISO 8140



Codice Code	ØP (H9)	ØQ	W (B13)	Z	Z1	H	L	F	kg	CPPF00	CSAF00
CFFF001760	4	8	4	16.0	8.0	5.0	21	M4x0.7	0,01		
CFFF001762	6	12	6	24.0	12.0	7.0	31	M6x1	0,02	-	1792
CFFF001764	8	16	8	32.0	16.0	10.0	42	M 8x1.25	0,03	-	1794
CFFF001766	10	20	10	40.0	20.0	12.0	52	M10x1.25	0,07	1778	1796
CFFF001768	12	24	12	48.0	24.0	14.0	62	M12x1.25	0,11	1780	1798
CFFF001770	16	32	16	64.0	32.0	19.0	83	M16x1.5	0,28	1782	1800
CFFF001772	20	40	20	80.0	40.0	25.0	105	M20x1.5	0,57	1784	1802
CFFF001774 (A)	25	50	25	100.0	50.0	32.0	132	M24x2	1,02	1786	
CFFF001775	30	55	30	109.5	56.5	38.5	148	M27x2	1,47	1787	
CFFF001776	35	70	35	144.0	72.0	44.0	188	M36x2	3,40	1788	

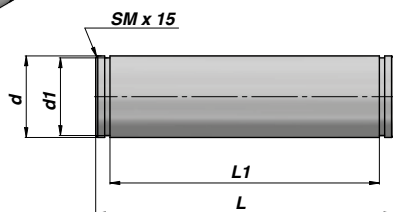
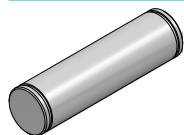
(A) = FUORI NORMATIVA - OUT OF RULE

MATERIALE : ACCIAIO 9SMn Pb 23 R 50 Kg/mm²
MATERIAL : STEEL 9SMn Pb 23 R 50 Kg/mm²

CPPF00

NEW!

PERNO PER FORCELLA
CLEVIS PIN



ISO 8140

Codice Code	Ød x L	Ød1	L1	kg
CPPF001778	10 x 25	9.6	20.0	0,01
CPPF001780	12 x 30	11.5	24.0	0,03
CPPF001782	16 x 39	15.2	32.0	0,06
CPPF001784	20 x 48	19.0	40.0	0,12
CPPF001786 (A)	25 x 60	23.9	50.0	0,22
CPPF001787	30 x 65	28.5	56.5	0,34
CPPF001788	35 x 84	33.0	70.0	0,62

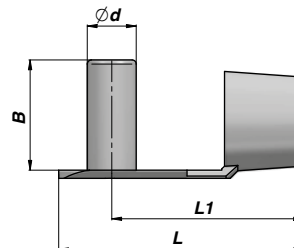
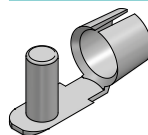
(A) = FUORI NORMATIVA - OUT OF RULE

MATERIALE : ACCIAIO 9SMn Pb 23 R 50 Kg/mm²
MATERIAL : STEEL 9SMn Pb 23 R 50 Kg/mm²

CSAF00

NEW!

CLIP PER FORCELLA
LOCKABLE PIN



ISO 8140

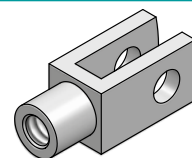
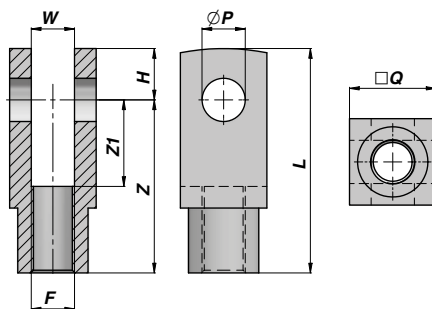
Codice Code	Ød x B	L	kg	
CSAF001790			0,01	
CSAF001792	6 x 14	28	23	0,01
CSAF001794	8 x 19	37	31	0,01
CSAF001796	10 x 23	46	39	0,01
CSAF001798	12 x 28	55	47	0,03
CSAF001800	16 x 36	72	62	0,06
CSAF001802	20 x 20	88	72	0,12

MATERIALE : ACCIAIO
MATERIAL : STEEL

FORCELLA FILETTATA - DIN 71752
THREADED FORK - DIN 71752

NEW!

CFFF



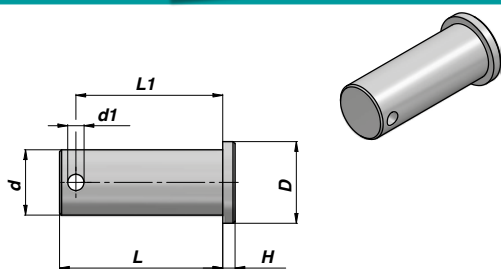
Codice Code	ØP (H9)	ØQ	W (B13)	Z	Z1	H	L	F	kg	CPPF	CSAF
CFFF012330	6	12	6	24	12	7	31	M6x1	0,02	12336	CSAF012342
CFFF012331	8	16	8	32	16	10	42	M8x1.25	0,03	12337	CSAF012343
CFFF012332	10	20	10	40	20	12	52	M10x1.5	0,07	12338	CSAF012344
CFFF012333	12	24	12	48	24	14	62	M12x1.75	0,12	12339	CSAF012345
CFFF012334	14	27	14	56	28	16	72	M14x2	0,18	12340	CSAF012346
CFFF012335	16	32	16	64	32	19	83	M16x2	0,28	12341	CSAF012347
CFFF012385	18	36	18	72	36	22	94	M18x2.5	0,40	12388	-
CFFF012386	20	40	20	80	40	25	105	M20x2.5	0,56	12389	CSAF012390

MATERIALE : ACCIAIO 9SMn Pb 23 R 50 Kg/mm²
 MATERIAL : STEEL 9SMn Pb 23 R 50 Kg/mm²

PERNO PER FORCELLA
CLEVIS PIN

NEW!

CPPF



UNI EN 22341/DIN 1434

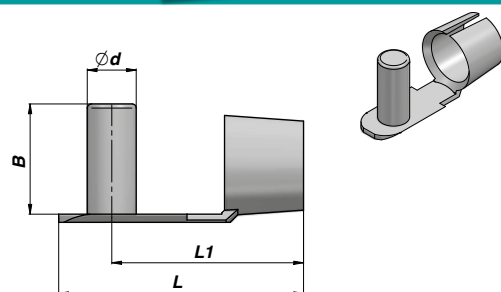
Codice Code	Ød x L	Ød1	L1	D X H	kg
CPPF012336	6 x 16	2	13.0	9 x 1.5	0,01
CPPF012337	8 x 20	2	17.0	12 x 2	0,01
CPPF012338	10 x 25	3	21.5	14 x 2	0,02
CPPF012339	12 x 30	3	26.5	16 x 3	0,03
CPPF012340	14 x 35	4	31.0	19 x 3	0,03
CPPF012341	16 x 40	4	36.0	20 x 3	0,05
CPPF012388	18 x 45	4	40.0	22 x 4	0,10
CPPF012389	20 x 49	4	43.5	24 x 4	0,13

MATERIALE : ACCIAIO 9SMn Pb 23 R 50 Kg/mm²
 MATERIAL : STEEL 9SMn Pb 23 R 50 Kg/mm²

CLIP PER FORCELLA
LOCKABLE PIN

NEW!

CSAF



DIN 71752

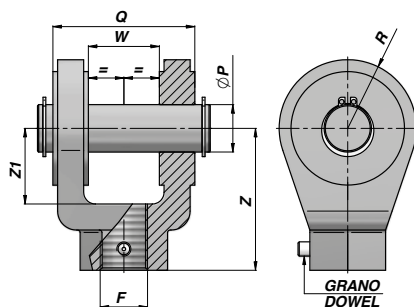
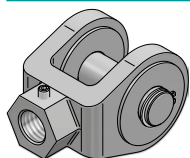
Codice Code	Ød x B	L	L1	kg
CSAF012342	6 x 14	28	23	0,01
CSAF012343	8 x 18	37	31	0,01
CSAF012344	10 x 23	46	39	0,01
CSAF012345	12 x 28	55	47	0,03
CSAF012346	14 x 30	62	51	0,05
CSAF012347	16 x 36	75	61	0,06
CSAF012390	20 x 44	95	77	0,12

MATERIALE : ACCIAIO
 MATERIAL : STEEL

CSKLP

NEW!

FORCELLA FILETTATA CON PERNO - ISO 8133
THREADED FORK WITH PIN - ISO 8133



Codice Code	ØP (H9)	Q	W	Z	Z1	F	R	FC (KN)	kg	Perno Pin
CSKLP00010	10	24	12	32	13	M10x1.25	12	8.0	0,10	CSKP000010
CSKLP00012	12	32	16	36	19	M12x1.25	17	12.5	0,18	CSKP000012
CSKLP00014	14	40	20	38	19	M14x1.5	17	20.0	0,23	CSKP000014
CSKLP00016	20	60	30	54	32	M16x1.5	29	32.0	0,90	CSKP000016
CSKLP00020	20	60	30	60	32	M20x1.5	29	50.0	0,91	CSKP000016
CSKLP00027	28	80	40	75	39	M27x2	34	80.0	1,92	CSKP000027
CSKLP00033	36	100	50	99	54	M33x2	50	125.0	4,92	CSKP000033
CSKLP00042	45	120	60	113	57	M42x2	53	200.0	6,53	CSKP000042
CSKLP00048	56	140	70	126	63	M48x2	59	320.0	10,11	CSKP000048
CSKLP00064	70	160	80	168	83	M64x3	78	500.0	19,20	CSKP000064
CSKLP00080	70	160	80	168	83	M80x3	78	500.0	18,42	CSKP000064

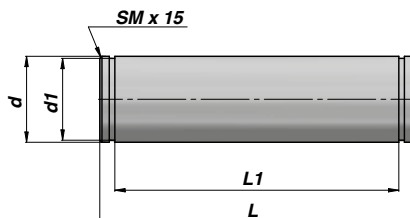
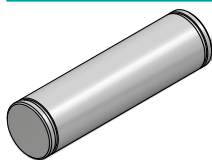
FC = CARICO DINAMICO AMMESSO - MAX DYNAMIC LOAD

MATERIALE : ACCIAIO S355JR UNI EN 10025
MATERIAL : STEEL S355JR UNI EN 10025

CSKP

NEW!

PERNO PER FORCELLA - ISO 8133
CLEVIS PIN - ISO 8133



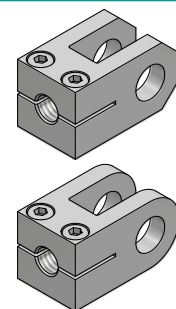
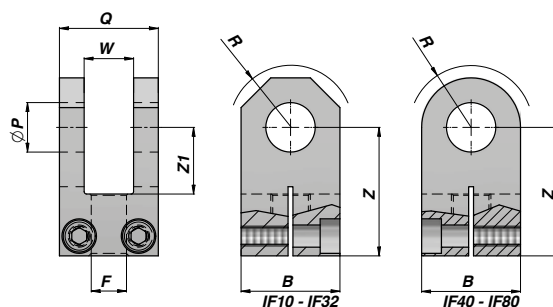
Codice Code	Ød (f8)	L	Ød1	Li	kg	Per Forcella For Fork
CSKP000010	10	34	9.6	29	0,02	CSKLP000010
CSKP000012	12	43	11.5	37	0,04	CSKLP000012
CSKP000014	14	51	13.4	45	0,06	CSKLP000014
CSKP000016	20	73	19.0	66	0,18	CSKLP000016 - CSKLP000020
CSKP000027	28	95	26.6	87	0,46	CSKLP000027
CSKP000033	36	117	34.0	107	0,93	CSKLP000033
CSKP000042	45	139	42.5	129	1,74	CSKLP000042
CSKP000048	56	161	53.0	149	3,11	CSKLP000048
CSKP000064	70	181	67.0	169	5,47	CSKLP000064 - CSKLP000080

MATERIALE : ACCIAIO PR 80 (35SMnPb10) / C40
MATERIAL : STEEL PR 80 (35SMnPb10) / C40

FORCELLA FILETTATA - ISO 8132
THREADED FORK - ISO 8132

NEW!

CSIF



Codice Code	ØP (H9)	Q (h16)	W (A13)	Z (js13)	Z1 min.	F (6H)	R max	B	FC (kN)	kg
CSIF000012	12	28	12	38	18	M12x1.25	16	25	8.0	0,16
CSIF000016	16	36	16	44	22	M14x1.5	20	30	12.5	0,27
CSIF000020	20	45	20	52	27	M16x1.5	25	40	20.0	0,53
CSIF000025	25	56	25	65	34	M20x1.5	32	50	32.0	1,12
CSIF000032	32	70	32	80	42	M27x2	40	65	50.0	2,18
CSIF000040	40	90	40	97	52	M33x2	50	80	80.0	4,40
CSIF000050	50	110	50	120	64	M42x2	63	100	125.0	7,60
CSIF000063	63	140	63	140	75	M48x2	71	120	200.0	17,70
CSIF000080	80	170	80	180	94	M64x3	90	150	320.0	30,60

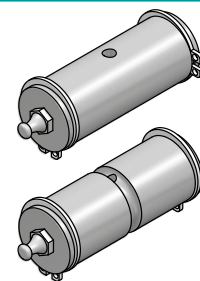
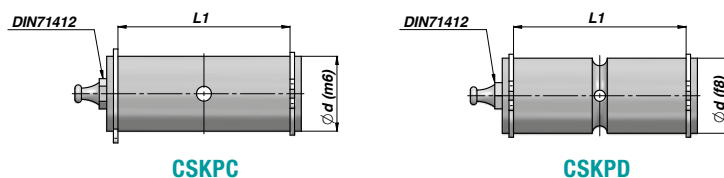
FC = CARICO DINAMICO AMMESSO - MAX DYNAMIC LOAD

MATERIALE : ACCIAIO S355JR UNI EN 10025 - S1 52.3
MATERIAL : STEEL S355JR UNI EN 10025 - S1 52.3

PERNO PER FORCELLA - ISO 8132
CLEVIS PIN - ISO 8132

NEW!

CSKPC - CSKPD



Codice Code	Codice Code	Q (f8/m6)	L1 (H16)	F (6H)	kg	Per Forcella For Fork
CSKPC01200	CSKPD01200	12	29	8.0	0,03	CSIF000012
CSKPC01600	CSKPD01600	16	37	12.5	0,60	CSIF000016
CSKPC02000	CSKPD02000	20	46	20.0	0,13	CSIF000020
CSKPC02500	CSKPD02500	25	57	32.0	0,25	CSIF000025
CSKPC03200	CSKPD03200	32	72	50.0	0,50	CSIF000032
CSKPC04000	CSKPD04000	40	92	80.0	1,00	CSIF000040
CSKPC05000	CSKPD05000	50	112	125.0	1,90	CSIF000050
CSKPC06300	CSKPD06300	63	142	200.0	3,80	CSIF000063
CSKPC08000	CSKPD08000	80	172	320.0	7,60	CSIF000080

MATERIALE : ACCIAIO 20MnCr5
MATERIAL : STEEL 20MnCr5