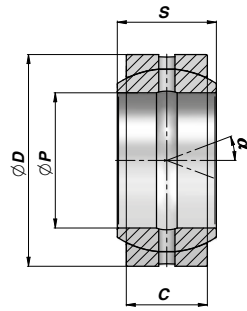


ROTULE "GE" "GE" BEARINGS

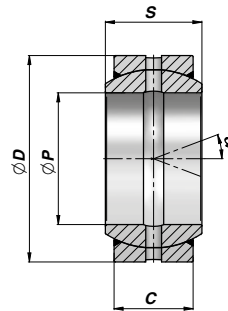
		Descrizione - Description	Type	Page
	NEW!	TABELLA COMPARATIVA ROTULE "GE" CROSS REFERENCE SPHERICAL PLAIN BEARINGS		134
		SNODO SFERICO RADIALE RICHIEDENTE MANUTENZIONE RADIAL BALL-JOINT REQUIRING MAINTENANCE	GE DO GE DO2RS	135
		SNODO SFERICO RADIALE RICHIEDENTE MANUTENZIONE RADIAL BALL-JOINT REQUIRING MAINTENANCE	GE LO	136
		SNODO SFERICO RADIALE RICHIEDENTE MANUTENZIONE RADIAL BALL-JOINT REQUIRING MAINTENANCE	GE HO2RS	136
		SNODO SFERICO RADIALE RICHIEDENTE MANUTENZIONE RADIAL BALL-JOINT REQUIRING MAINTENANCE	GE FO GE FO2RS	137
		SNODO SFERICO RADIALE NON RICHIEDENTE MANUTENZIONE MAINTENANCE FREE RADIAL BALL-JOINT	GE UK GE UK2SR	138
	NEW!	SNODO SFERICO RADIALE NON RICHIEDENTE MANUTENZIONE MAINTENANCE FREE RADIAL BALL-JOINT	GE FW GE FW2RS	139

**TABELLA COMPARATIVA ROTULE "GE"
CROSS REFERENCE SPHERICAL PLAIN BEARINGS**

CONTARINI	SKF	INA	International Reference
GE ... DO	GE ... E/ES	GE ... DO	GE ... E/ES
GE ... DO2RS	GE ... ES-2RS	GE ... DO-2RS	GE ... ES-2RS
GE ... LO	GEG ... ES	GE ... LO	GEEW ... ES
GE ... HO2RS	GEM ... ES-2RS	GE ... HO-2RS	GEEM ... ES-2RS
GE ... FO	GEH ... ES	GE ... FO	GEG ... ES
GE ... FO2RS	GEH ... ES-2RS	GE ... FO-2RS	GEG ... ES-2RS
GE ... UK	GE ... C	GE ... UK	GE ... C
GE ... UK2RS	GE ... TXE-2LS / TXA-2LS	GE ... UK-2RS	GE ... ET-2RS
GE ... FW	GEH ... C	GE ... FW	GEG ... C
GE ... FW2RS	GEH ... TXE-2LS / TXA-2LS	GE ... FW-2RS	GEG ... ET/XT ... -2RS
GE ... TGR	GE ... TXGR	-	GE ... ET-X
GE ... TGR2RS	GE ... TXG3E-2LS / TXG3A-2LS	-	GE ... XT ... -2RS X
GE ... ZO	GEZ ... ES	GE ... ZO	GEZ ... ES
GE ... ZO2RS	GEZ ... ES-2RS	GE ... ZO-2RS	GEZ ... ES-2RS
GE ... SX	-	GE ... SX	GAC ... S
GE ... SW	GAC ... F	GE ... SW	GAC ... T
GE ... AX	-	GE ... AX	GX ... S
GE ... AW	GX ... F	GE ... AW	GX ... T

SNODO SFERICO RADIALE RICHIEDENTE MANUTENZIONE
RADIAL BALL-JOINT REQUIRING MAINTENANCE
GE DO/GE DO2RS


TYPE DO



TYPE DO...2RS



Codice Code Type DO	Codice Code Type DO...2RS	ØP	ØD	S	C	α	FC (kN)	kg
*CGE0100000 NEW!	-	10	19	9	6	12	8.15	0,01
*CGE0120000	-	12	22	10	7	11	10.80	0,01
CGE0150000	CGE0001425	15	26	12	9	8	17.00	0,02
CGE0160000 (A)	-	16	30	14	10	10	21.20	0,03
CGE0170000	CGE0001426	17	30	14	10	10	21.20	0,04
CGE0200000	CGE0001427	20	35	16	12	9	30.00	0,06
CGE0250000	CGE0001428	25	42	20	16	7	48.00	0,11
CGE0300000	CGE0001429	30	47	22	18	6	62.00	0,14
CGE0350000	CGE0001430	35	55	25	20	6	80.00	0,22
CGE0400000	CGE0001431	40	62	28	22	7	100.00	0,30
CGE0450000	CGE0001432	45	68	32	25	7	127.00	0,40
CGE0500000	CGE0001433	50	75	35	28	6	156.00	0,54
CGE0600000	CGE0001434	60	90	44	36	6	245.00	1,00
CGE0700000	CGE0001435	70	105	49	40	6	315.00	1,50
CGE0800000	CGE0001436	80	120	55	45	6	400.00	2,20
CGE0900000	CGE0001437	90	130	60	50	5	490.00	2,70
CGE1000000	CGE0001438	100	150	70	55	7	610.00	4,30
CGE1100000	CGE0001439	110	160	70	55	6	655.00	4,70
CGE1200000	CGE0001440	120	180	85	70	6	950.00	8,00
CGE1400000 NEW!	CGE0001441	140	210	90	70	7	1080.00	11,00
CGE1600000 NEW!	CGE0001442	160	230	105	80	8	1370.00	13,50
CGE1800000 NEW!	CGE0001443	180	260	105	80	6	1530.00	18,50
CGE2000000 NEW!	CGE0001444	200	290	130	100	7	2120.00	28,00

FC = CARICO DINAMICO AMMESSO - MAX DYNAMIC LOAD

* = NON RILUBRIFICABILE - WITHOUT GREASE NIPPLE

(A) = FUORI NORMATIVA - OUT OF RULE

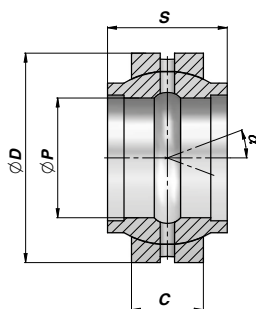
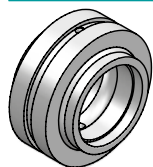
ACCOPPIAMENTO - COUPLING : ACCIAIO/ACCIAIO - STEEL/STEEL

MATERIALE : ACCIAIO ISO 12240-1 SERIE E

MATERIAL : STEEL ISO 12240-1 SERIES E

GE LO

**SNODO SFERICO RADIALE RICHIEDENTE MANUTENZIONE
RADIAL BALL-JOINT REQUIRING MAINTENANCE**



TYPE LO

Codice Code Type LO	ØP	ØD	S	C	α	FC (kN)	kg
CGE0001445 NEW!	12	22	12	7	4	10.8	0,02
CGE0001446 NEW!	16	28	16	9	4	17.6	0,03
CGE0001447	20	35	20	12	4	30.0	0,07
CGE0001448	25	42	25	16	4	48.0	0,12
CGE0001449	32	52	32	18	4	67.0	0,20
CGE0001450	40	62	40	22	4	100.0	0,34
CGE0001451	50	75	50	28	4	156.0	0,56
CGE0001452	63	95	63	36	4	255.0	1,20
CGE0001453 NEW!	70	105	70	40	4	315.0	1,70
CGE0001454 NEW!	80	120	80	45	4	400.0	2,40
CGE0001455 NEW!	90	130	90	50	4	490.0	3,20
CGE0001456 NEW!	100	150	100	55	4	610.0	4,80
CGE0001457 NEW!	110	160	110	55	4	655.0	5,80
CGE0001458 NEW!	125	180	125	70	4	950.0	8,50

FC = CARICO DINAMICO AMMESSO - MAX DYNAMIC LOAD

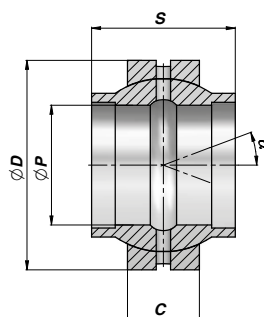
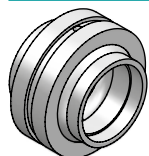
ACCOPIAMENTO - COUPLING: ACCIAIO/ACCIAIO - STEEL/STEEL

MATERIALE : ACCIAIO ISO 12240-1 SERIE W

MATERIAL : STEEL ISO 12240-1 SERIES W

GE HO2RS

**SNODO SFERICO RADIALE RICHIEDENTE MANUTENZIONE
RADIAL BALL-JOINT REQUIRING MAINTENANCE**



TYPE HO...2RS

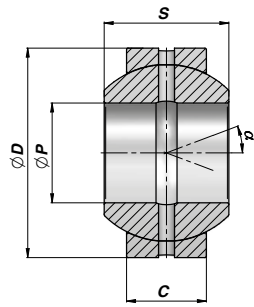
Codice Code Type HO...2RS	ØP	ØD	S	C	α	FC (kN)	kg
CGE0001461	20	35	24	12	3	30	0,05
CGE0001462	25	42	29	16	3	48	0,10
CGE0001463	30	47	30	18	3	62	0,14
CGE0001464	35	55	35	20	3	80	0,24
CGE0001465	40	62	38	22	3	100	0,29
CGE0001466	45	68	40	25	3	127	0,43
CGE0001467	50	75	43	28	3	156	0,54
CGE0001468	60	90	54	36	3	245	1,10
CGE0001469	70	105	65	40	3	315	1,60
CGE0001470	80	120	74	45	3	400	2,40

FC = CARICO DINAMICO AMMESSO - MAX DYNAMIC LOAD

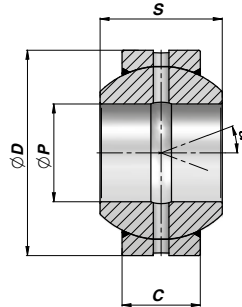
ACCOPIAMENTO - COUPLING: ACCIAIO/ACCIAIO - STEEL/STEEL

MATERIALE : ACCIAIO

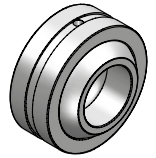
MATERIAL : STEEL

SNODO SFERICO RADIALE RICHIEDENTE MANUTENZIONE
RADIAL BALL-JOINT REQUIRING MAINTENANCE
GE FO/GE FO2RS


TYPE FO



TYPE FO...2RS



Codice Code Type FO	Codice Code Type FO...2RS	ØP	ØD	S	C	α	FC (kN)	kg
*CGE0001474	NEW!	12	26	15	9	18	17.0	0,03
CGE0001475	NEW!	15	30	16	10	16	21.2	0,04
CGE0001476	NEW!	17	35	20	12	19	30.0	0,07
CGE0001477		20	42	25	16	17	48.0	0,15
CGE0001478		25	47	28	18	17	62.0	0,19
CGE0001479		30	55	32	20	17	80.0	0,29
CGE0001480		35	62	35	22	16	100.0	0,39
CGE0001481		40	68	40	25	17	127.0	0,52
CGE0001482		45	75	43	28	15	156.0	0,68
CGE0001483		50	90	56	36	17	245.0	1,40
CGE0001484		60	105	63	40	17	315.0	2,00
CGE0001485		70	120	70	45	16	400.0	2,90
CGE0001486		80	130	75	50	14	490.0	3,50
CGE0001487	NEW!	90	150	85	55	15	610.0	5,40
CGE0001488	NEW!	100	160	85	55	14	655.0	5,90
CGE0001489	NEW!	110	180	100	70	12	950.0	9,70
CGE0001490	NEW!	120	210	115	70	16	1080.0	15,00
CGE0001491	NEW!	140	230	130	80	16	1370.0	18,50
CGE0001492	NEW!	160	260	135	80	16	1530.0	25,00
CGE0001493	NEW!	180	290	155	100	14	2120.0	35,50

FC = CARICO DINAMICO AMMESSO - MAX DYNAMIC LOAD

* = NON RILUBRIFICABILE - WITHOUT GREASE NIPPLE

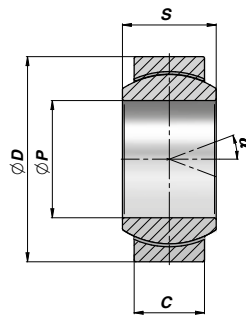
ACCOPPIAMENTO - COUPLING : ACCIAIO/ACCIAIO - STEEL/STEEL

MATERIALE : ACCIAIO ISO 12240-1 SERIE G

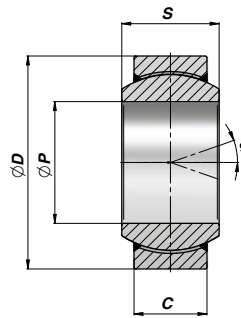
MATERIAL : STEEL ISO 12240-1 SERIES G

GE UK/GE UK2RS

**SNODO SFERICO RADIALE NON RICHIEDENTE MANUTENZIONE
MAINTENANCE FREE RADIAL BALL-JOINT**



TYPE UK



TYPE UK...2RS

Codice Code Type UK	Codice Code Type UK...2RS	ØP	ØD	S	C	α	FC Type UK (kN)	FC Type UK2RS (kN)	kg
CGE0001518 NEW!		12	22	10	7	11	11.4		0,01
CGE0001519 NEW!		15	26	12	9	8	17.6		0,02
CGE0001520 NEW!	CGE0001525	17	30	14	10	10	22.4	48	0,03
CGE0001521	CGE0001526	20	35	16	12	9	31.5	68	0,06
CGE0001522	CGE0001527	25	42	20	16	7	51.0	130	0,11
CGE0001523	CGE0001528	30	47	22	18	6	65.5	170	0,14
	CGE0001529	35	55	25	20	6		220	0,22
	CGE0001530	40	62	28	22	7		280	0,30
	CGE0001531	45	68	32	25	7		360	0,40
	CGE0001532	50	75	35	28	6		440	0,54
	CGE0001533	60	90	44	36	6		690	1,00
	CGE0001534	70	105	49	40	6		880	1,50
	CGE0001535	80	120	55	45	6		1135	2,20
	CGE0001536	90	130	60	50	5		1375	2,70
	CGE0001537	100	150	70	55	7		1725	4,30
	CGE0001538	110	160	70	55	6		1860	4,70
	CGE0001539	120	180	85	70	6		2700	8,00
	CGE0001540 NEW!	140	210	90	70	7		3010	11,00
	CGE0001541 NEW!	160	230	105	80	8		3840	13,50
	CGE0001542 NEW!	180	260	105	80	6		4320	18,50
	CGE0001543 NEW!	200	290	130	100	7		6000	28,00

FC = CARICO DINAMICO AMMESSO - MAX DYNAMIC LOAD

CGE...UK = ACCOPPIAMENTO - COUPLING : ACCIAIO SU BRONZO SINTERIZZATO/PTFE - STEEL ON SINTERED BRONZE/PTFE

CGE...UK2RS = ACCOPPIAMENTO - COUPLING : CROMO DURO/PTFE - HARD CHROMIUM/PTFE

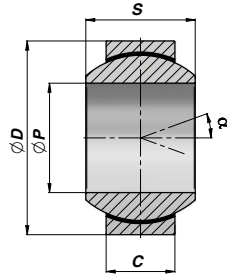
MATERIALE : ACCIAIO ISO 12240-1 SERIE E

MATERIAL : STEEL ISO 12240-1 SERIES E

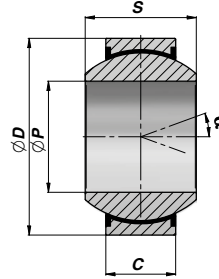
SNODO SFERICO RADIALE NON RICHIEDENTE MANUTENZIONE
MAINTENANCE FREE RADIAL BALL-JOINT

NEW!

GE FW/GE FW2RS



TYPE FW



TYPE FW...2RS



Codice Code Type FW	Codice Code Type FW...2RS	ØP	ØD	S	C	α	FC (kN)	kg
CGE0003503		12	26	15	9	18	17.6	0,03
CGE0003504		15	30	16	10	16	22.4	0,04
CGE0003505		17	35	20	12	19	31.5	0,07
CGE0003506		20	42	25	16	17	51.0	0,15
CGE0003507		25	47	28	18	17	65.5	0,19
CGE0003508	CGE0003550	30	55	32	20	17	210.0	0,29
	CGE0003551	35	62	35	22	16	275.0	0,39
	CGE0003552	40	68	40	25	17	360.0	0,52
	CGE0003553	45	75	43	28	15	440.0	0,68
	CGE0003554	50	90	56	36	17	690.0	1,40
	CGE0003555	60	105	63	40	17	885.0	2,00
	CGE0003556	70	120	70	45	16	1125.0	2,90
	CGE0003557	80	130	75	50	14	1380.0	3,50
	CGE0003558	90	150	85	55	15	1720.0	5,40
	CGE0003559	100	160	85	55	14	1840.0	5,90
	CGE0003560	110	180	100	70	12	2685.0	9,70
	CGE0003561	120	210	115	70	16	3015.0	15,00
	CGE0003562	140	230	130	80	16	3845.0	18,50
	CGE0003563	160	260	135	80	16	4320.0	25,00
	CGE0003564	180	290	155	100	14	6000.0	35,50
	CGE0003565	200	320	165	100	15	6600.0	45,00

FC = CARICO DINAMICO AMMESSO - MAX DYNAMIC LOAD

CGE...FW = ACCOPPIAMENTO - COUPLING : ACCIAIO SU BRONZO SINTERIZZATO/PTFE - STEEL ON SINTERED BRONZE/PTFE

CGE...FW2RS = ACCOPPIAMENTO - COUPLING : CROMO DURO/PTFE - HARD CHROMIUM/PTFE

MATERIALE : ACCIAIO ISO 12240-1 SERIE G

MATERIAL : STEEL ISO 12240-1 SERIES G